



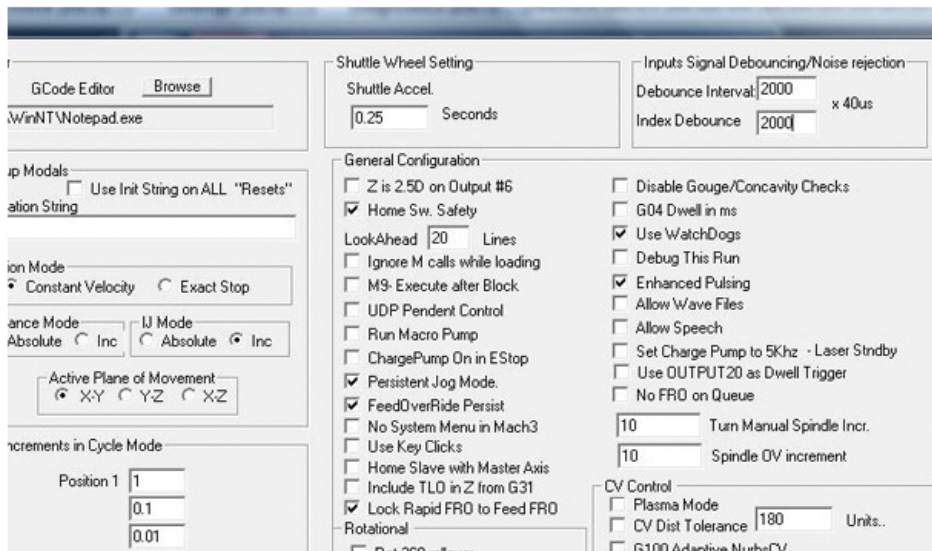
TECHNOLOGY FROM A  
NAME YOU CAN TRUST.

# TROUBLESHOOTING TIPS

## Z TOOL SENSE NOT MOVING ALL THE WAY TO SENSOR PLATE

The following outlines the procedure to solve the problem of the Z Tool Sense not moving all the way to the sensor plate when using the Tool Sense feature.

1. Move your cursor over the word “by” in Powered by Gorilla CNC. Once the hand appears click and the menu bar should appear at the top of the screen.
2. Select “Config” from the menu bar.
3. From the Config drop down menu select “General Config”.
4. In the General Config in the Inputs Signal Debouncing/Noise rejection section change the Debounce Interval and Index Debounce to 2000.
5. Select OK.



6. Move the cursor over the word “by” in Built By to close the menu bar.
7. Select “Home All” and see if this resolves the issue.

If this does not correct the problem then log onto the General CNC website and on the technical support page fill in a service request ticket and detail the problem. We will contact you very soon to resolve the issue.

