

INSTRUCTIONS FOR PATTERN USE

1. These patterns are for non-commercial use only.
2. Print at 100% with no scaling. There is a 2" square on each pattern; please check to assure that your patterns are printing accurately.
3. Pattern pieces are made up of multiple pages. Overlap pages, matching lines and hash marks to make the pattern piece.
4. Note the guides- place on fold, stretch direction, grain line, etc.
5. Follow instructions to make the garment.

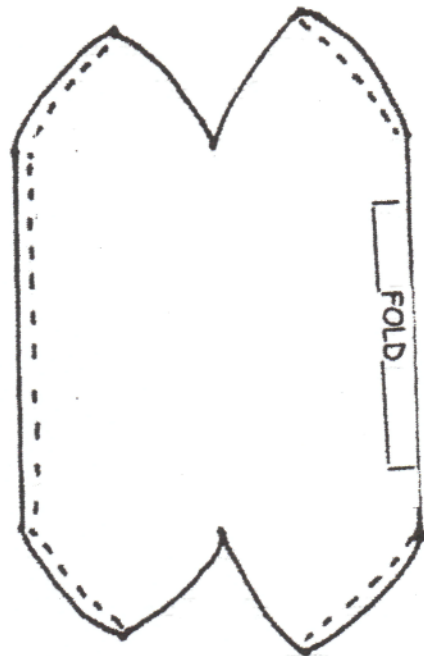
Fabric Cap Instructions

JULY 2008

This method results in a cap with more stretch than those that are a single layer.

Use "stretchy" knit. Make certain that the crosswise grain of the knit (most stretch) is placed correctly according to the pattern. Cut out .

Stitch on dotted lines as shown.
Do not stitch in "v's."



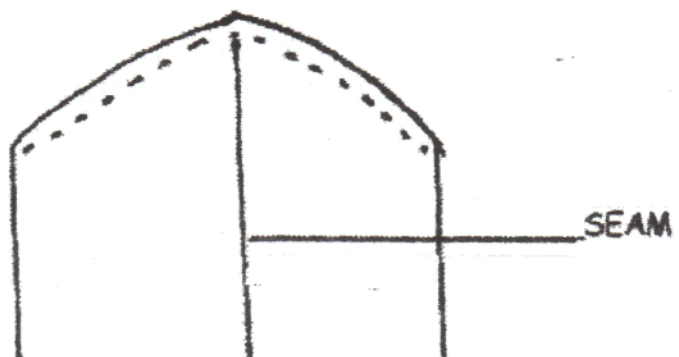
Turn cap so that seams are inside,

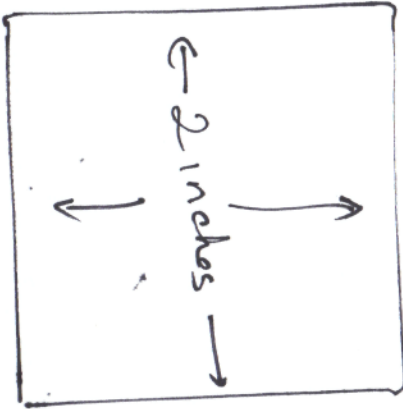
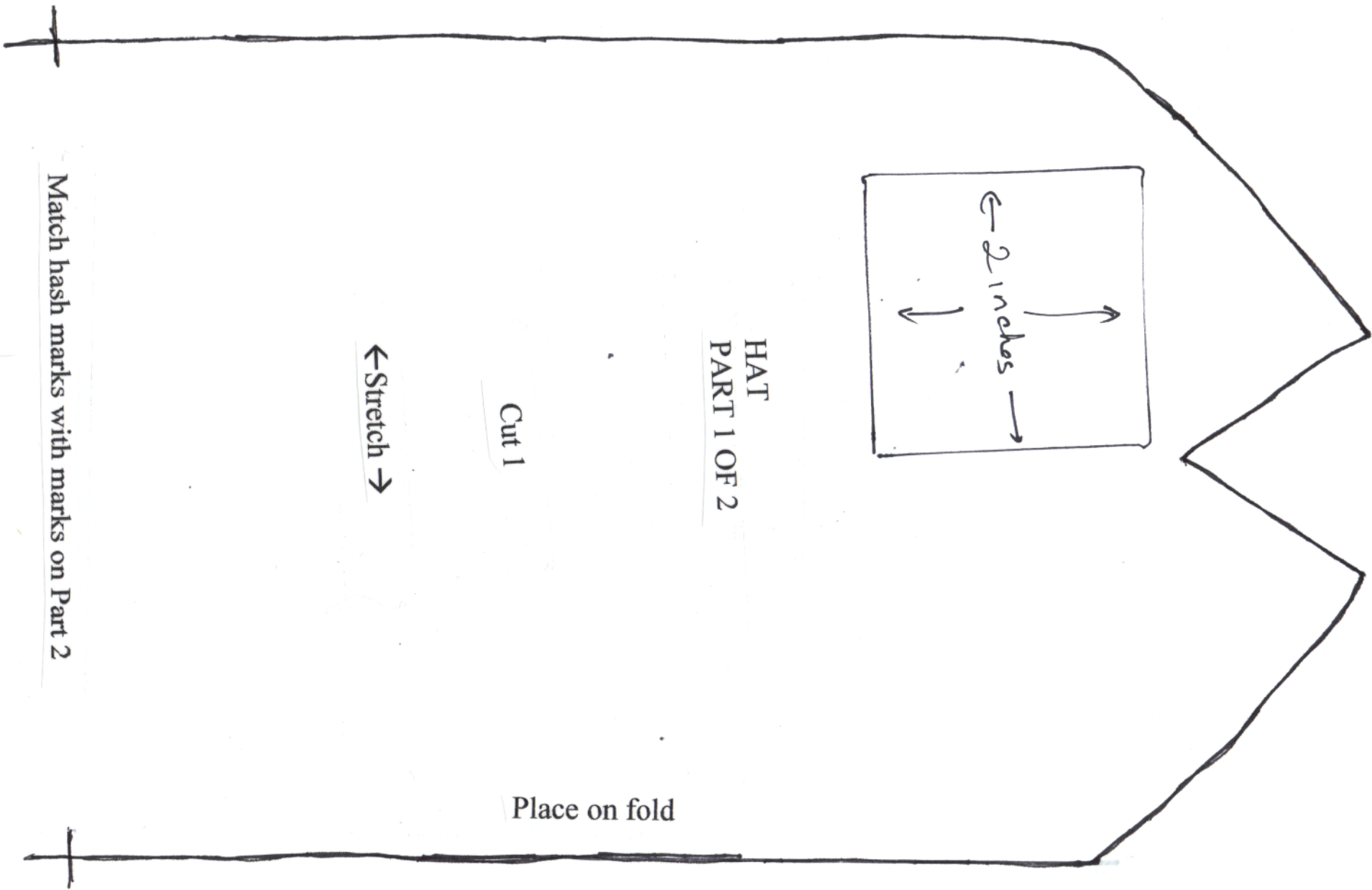
Match Seams

Stitch on dotted line as shown.

Turn right side out ,

The cap is finished!





HAT
PART 1 OF 2

Cut 1

← Stretch →

Place on fold

Match hash marks with marks on Part 2

Match hash marks with marks on Part 1

HAT
PART 2 OF 2

