

AMERISPORT INDUSTRIES

Cat Eye Quad Installation Instructions

Tools and materials required and recommended for the project:

- Cutoff wheel (of any type)
- Small 2 to 3 inch body grinder or file
- Drill with $\frac{5}{64}$, $\frac{1}{8}$, and counter sink bits
- $\frac{1}{2}$ " masking tape

Prepare for the Cat Eye Quad installation by removing the headlight buckets. ***If you require a detailed step-by-step procedure at this point, do not attempt to install the new light set on your own and seek professional help.*** With both headlight buckets removed, remove the stock headlight bulb assemblies and mounting housings. Now the buckets are stripped, follow the steps below to begin the modifications needed to install your new "Cat Eye Quads".

First inspect the kit to assure all of the parts are included. The kit should contain the following:

1. 2-headlight sub assemblies with wire harnesses installed



2. 2-headlight trim bezels in black etching primer
3. Hardware package including a stop adjuster with allen bolt, 4 flat head SS screws, 14 oval head SS screws.

AMERISPORT INDUSTRIES



To start the headlight bucket modifications, you will need the following additional tools and supplies:

1. **Cut off wheel of some type. E.g.**



2. **Drill with $\frac{3}{32}$ and $\frac{5}{64}$ drill bits**
3. **$\frac{1}{2}$ " masking tape**
4. **Center punch**
5. **Small counter sink bit**
6. **Small 3" angle grinder**

AMERISPORT INDUSTRIES



7. Philips screwdriver

Place the bucket forward so you're looking at the original light opening; using the 1/2" tape, place the tape across the top of the bucket following the upper curve. Next, tape along both sides of each bucket.

Measure up from the bottom outside as shown below. Make sure you use the correct measurement orientation for each bucket. The 2" mark is towards the inside and the 2 1/4" mark is towards the outside as each bucket relates to its proper installed location in the car. (Left bucket shown)

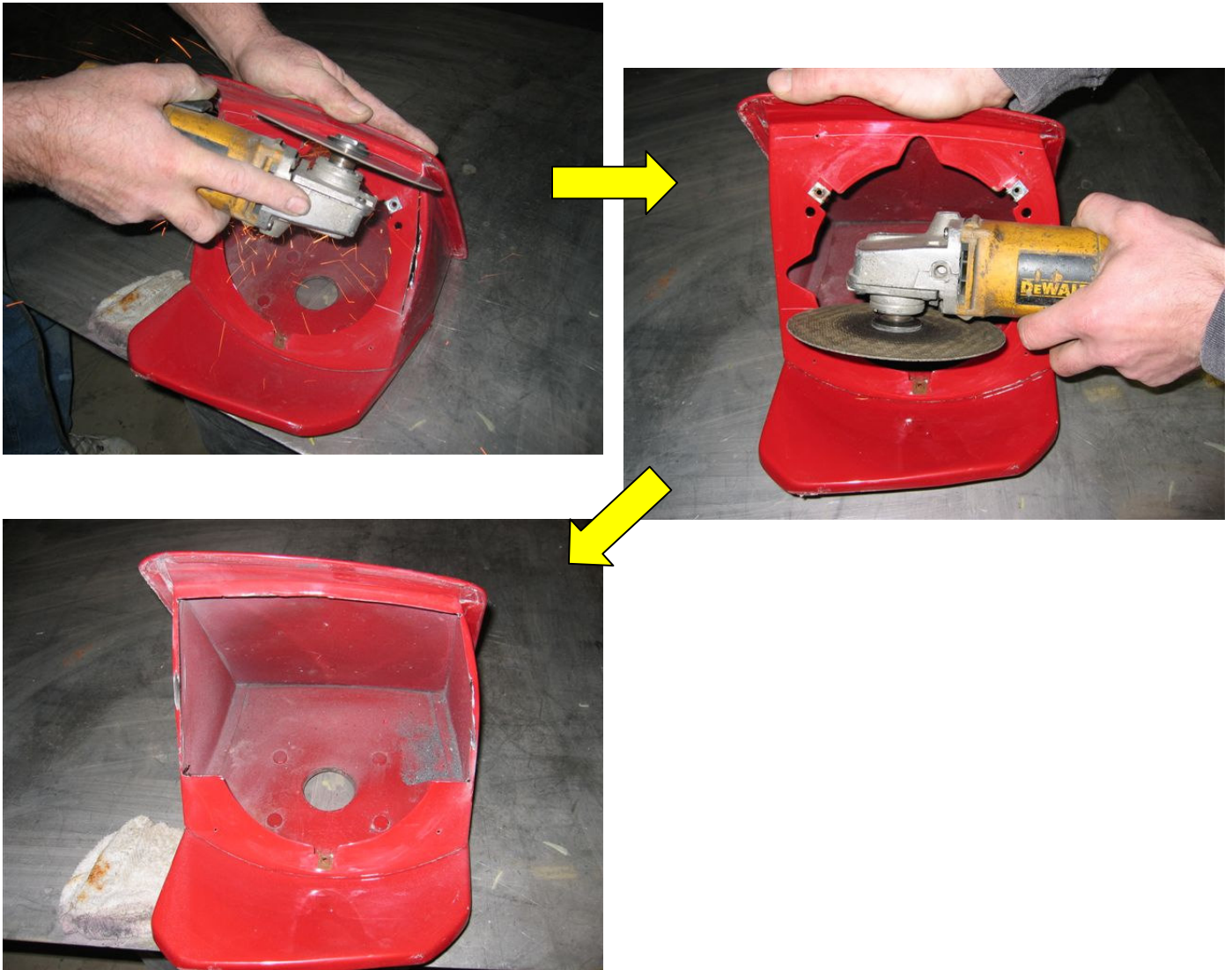
Place the bucket on its side with a wet rag along the edge to be cut as protection against overheating the paint causing bubbling. Cut each side first 1/2 way through the tape---draw a line if needed. Next cut the top following the under the tape as shown. Final cuts are along the bottom as shown next.



AMERISPORT INDUSTRIES



AMERISPORT INDUSTRIES



With the center cut out, place the bucket on its side again and start grinding the sheet metal edge down until it is smooth with the inside thickness of the bucket.

AMERISPORT INDUSTRIES



With the center section removed and ground as described, test fit the bezel in each bucket making sure the top and sides are flush with the edges. Late model car may require some grinding on the lower bezel radius to obtain the proper fit.

AMERISPORT INDUSTRIES

Once both bezels fit their buckets properly, remove them and mark the outside bezel hole locations by following the pictures below.



Using a 3/32 bit, drill both sides of the bucket and remove the burrs on the inside left from drilling each hole.

Put the bezel back on the light bulb assembly several times so you can easily remove the bezel without moving the light assembly. This procedure is important to the overall success of the fit and finish. The outside adjuster will protrude through the bezel, which helps align the two parts to themselves correctly.



Place a small amount of clay or two-sided tape on the lower corners of light mount plate. This is to help keep the bulbs from moving after they are placed in the bucket while you drill the mount holes and install the screws.

AMERISPORT INDUSTRIES

Find a way to stand the bucket up using towels or something soft so the light opening face is level and parallel with the ground. This helps keep the light mounting plate from moving while you drill the screw holes. Carefully place the light bulb assembly onto the bucket keeping the upper surface close to the top of the headlight ridge.



Next put the bezel back on the bulb assembly and test fit the bezel to the bucket once again. The bezel should fit tight and snug with or without the bulbs installed.

Once the bezel fits properly with the bulbs installed and wiring harness assembled with a tie strap to secure the bulk of the new wiring inside the bucket re-install the light assembly into the bucket putting the original harness through the center hole.



AMERISPORT INDUSTRIES

Re-mount the trim bezel on the bucket.

Now CAREFULLY REMOVE THE BEZEL MAKING SURE THE BULB MOUNT PLATE DOES NOT MOVE----- THIS IS IMPROTANT! If the bulb mount plate moves and you secure it incorrectly, you bezel will not properly fit the bucket.



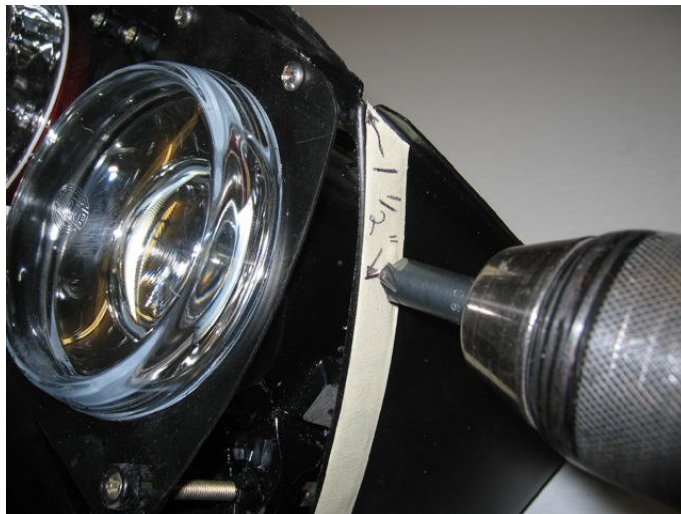
Hold the headlight mount plate in place and carefully drill one of the upper outside holes with a 3/32-drill bit.

Put one of the oval head screws in the hole and drill the other outside hole and put another screw in.



AMERISPORT INDUSTRIES

Now drill and lower two holes and the upper center two holes left. Now install the four remaining. The light assemblies are now properly mounted ready for you to install the bezels.



Set the bezel back on the bucket/light assembly making sure the fit is correctly aligned, flush on both sides and the bottom center hole lines up with the original light mount speed nut. Once the fit has been checked and meets with your approval, drill the side holes through the fiberglass bezel using the 5/64 bit and the first holes you drilled through the buckets as pilot holes. Remove the bezel again and counter sink the bucket holes by using a small counter sink bit. Make sure you do not counter sink too deep with the bit.

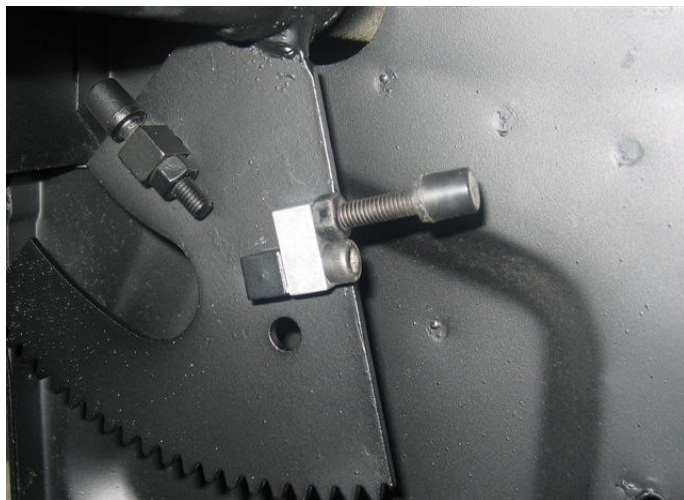
Re-mount the bezel, align the freshly drilled bezel holes with the counter sunk bucket holes and install the flush mount screws into the fiberglass. (Note) the tabs on the bezels are made from 3 layers of 10 oz cloth and should never strip out unless they are over tightened. If they should strip sometime in the future, you may have to grind a thin amount of fiberglass off the outside of the mount lip and add a small speed nut again re-installing the counter sunk screw into the new speed nut.



AMERISPORT INDUSTRIES

With the bezel properly mounted, you may need to remove it to complete any and all paintwork desired. Once the bezel has been installed for the final time, re-install the light bucket into the car.

Now that each bucket has been installed, carefully open the lights by touching the battery cable to the battery with the light switch and key on. Check and make sure the bucket does not rub the fender on the way up or down and there is proper clearance to the lower part of the new bezel to the forward fender opening lip. Plug in the wire harness and test the lights.



Install the new stop adjuster onto the existing stop adjuster mount like pictured and re-install the original stop bolt.

Adjust the stop so the new bezel bottom is flush with the fender lip like original.

After checking clearances, do the on-off on-off test and now align the bulbs through the alignment holes to fit your headlight driving needs within the legal limits.

Stand back and admire your cats new look; from a frog to a prince in just a few hours. Good luck and drive it like you stole it---but only on the track. Cheers and thank you for your order.



Best regards,

Kirk

Kirk Evans
AmeriSport Industries LLP