

# NAVIGATE

An Introduction into Life and Ministry



Memorial Drive United Methodist Church

Dr. Charles B. Simmons, Senior Minister

12955 Memorial Drive

Houston, Texas 77079

713-468-8356

[www.mdumc.org](http://www.mdumc.org)



*Welcome to Memorial Drive UMC!*

*There's a place for you in our church family. We hope this booklet will help you get plugged in to the opportunities available at MDUMC – ways you can worship, grow, witness, and give. Our desire is to help you grow in your faith as a Christian with worship occasions, study and fellowship offerings, and ministry programs that get you involved in this faith community.*

A handwritten signature in black ink that reads "Charles B. Simmons".

**Dr. Charles B. Simmons**  
**Senior Minister**



## **Worship Opportunities**

### **Sunday Worship**

Traditional

8:15, 9:30 & 11:00 a.m. in the Sanctuary

Contemporary Worship – *the journey*

11:01 a.m., in Wesley Hall (*as of summer 2010, in The Well at the Connection Center*)

### **Wednesday Worship**

Contemplative Service - 6:30 p.m., in Friendship Court

### **Thursday Worship**

Noon, Senior Center at Connection Center

### **Evening Prayer**

First Sunday of the month, 5:30 p.m., in Landrum Chapel

# Navigate Contents



## Sunday School

Sunday School Classes for Adults	4
Sunday School Classes for Children	6
Sunday School Classes for Youth	6

## Programs & Ministries of MDUMC

Men's Ministry and <i>the Journey</i> Community	7
Women's Ministry	7
Welcome & Witness Ministry	8
Singles Ministry	9
Youth/College Ministry	10
Children's Ministry	11
Weekday School & Full-time Childcare	12
Spiritual Formation	13
Caring Ministries	14
Outreach & Missions	16
Senior Adults	17
Young Adult Ministry & Evangelism	18
Justice & Mercy	19
Music & Fine Arts	19
Recreation	20
Discipleship	21
Media Ministry	22

<b>Pastoral Staff</b>	22
-----------------------	----

<b>Director of Programs &amp; Communications</b>	22
--	----

<b>Questions &amp; Answers</b>	23
--------------------------------	----

# Sunday School Classes for Adults, 9:30 a.m., 11:00 a.m.

Contact Vicky Harris ext. 129 [vickyharris@mdumc.org](mailto:vickyharris@mdumc.org)

## **Bridgebuilders** – Wesley Hall

We are a group of about 250 senior adults ages 61–93 which make up the largest and one of the most active classes in the church. We are a warm, caring, supportive group of Christians who share each other's burdens and celebrate each other's joys, all while studying to strengthen our faith and deepen our knowledge of God's word.

## **Covenant** – Room D219

The Covenant Class focuses on discussing the Bible as it relates to life and consists of couples and singles ages 41 to 63 with school-age children. We believe in participating in group projects in the community and have regular gatherings outside of class.

## **Discovery** – Room D216

The Discovery Class members range in age from 40 up. We are involved in many areas of church life with many assisting with Sunday children's ministries. Most of us have school-age children. Class lessons use a discussion format and cover a variety of topics. We sponsor service projects throughout the year and have frequent adult or family social events.

## **Family Connections** – Room D222

Our class is composed of families meeting to worship and focus on enriching family life through personal and communal growth with God, family, Sunday school class, and the community. All families and visitors are welcome. Our current age range is 20's–40's. Come grow with us!

## **Friendship** – Room D126

We are a class of singles and couples 50 years and up. Lessons are taught by our members and by outside speakers who cover wide-ranging, typically Methodist subjects. Outreach efforts include making sandwiches for the Soupmobile, support for the House of Amos, Larkin Street, the Methodist Children's Home and other mission projects. We enjoy periodic parties, outings and social events. Visitors are welcome!

## **Genesis** – Room D217

Genesis is a class of couples, 50+ years, who through prayer, study, lively weekly discussions and fellowship seek to nurture our continued growth in the Spirit of Christ and to share our gifts through active participation in the life of the church and the community.

## **Kindred Souls** – Room A201

Offering a group setting for women who attend church alone, whether single or married, our class follows the Adult Bible Study Series and is led by class members. Visitors and new members are welcome. We are open to women of all ages.

## **New Horizons** – Room D127

New Horizons is a supportive group of single adults age 48 and up with great class discussion with our teachers. Socials include regular outings and lunch after church. The House of Amos and Larkin Community Center are strongly supported by our class.

**Probers – Room D220**

The Probers class has a lively interest in the values of today's society as they relate to Christians. Our class hosts a variety of speakers from the class, church and community. By probing into the hard questions, we foster spirited discussion and offer our members an opportunity to grow theologically and scripturally. Class outings are fun, both near and far. We offer a caring and supportive environment for class members. We support local, Conference and worldwide mission efforts. We welcome visitors and new members of all ages both couples and singles. Our average attendance is 50.

**Ragamuffins – Room F128**

We are singles of all ages who are willing to admit our imperfections and are interested in growing spiritually toward perfection! We enjoy short-term studies presented in a discussion format. Some of those studies include The Ragamuffin Gospel, The Gift of the Blessing and When God Doesn't Answer Your Prayer. We support and encourage each other as we travel this journey called life. This group is very active in the Singles Ministry and the general ministry of the church, especially missions and outreach.

**Roots – The Connection Center Room 462**

This class is for parents (ages 40 plus) of teens through college students. Our focus is on Bible study and family issues. We are a great support group for many of our youth ministry events, such as workcamps and the Soupmobile. Visitors are warmly welcomed!

**Sunrizons – Room D218**

Comprised of singles and married couples in our mid 30's through 60's, Sunrizons is a Sunday school class of dynamic and energetic individuals. Our members are very active within the church and within the community. Our door is always open to visitors and new members to visit or become part of the Sunrizons family. We host Bible studies, community outreach and service, missions and social events.

**Upper Room – A103 (Bell Room)**

We are adults of all ages that meet for a serious, but lively, study of the Bible. Believing that Bible study is a "contact sport of the mind and heart," class members are responsible for leading the discussions each Sunday. One book of the Bible is studied in depth alternating between Old Testament and New Testament. All ages, married or single, are welcome to join us.

**Visions – Room D221**

Our class is made up of married couples in our 20's through 40's who focus on Bible study and its application to our daily lives. Monthly social events provide opportunities for developing relationships, and service projects put our faith into action. Frequent get-togethers are planned for the adults only and frequent events include the children of our class members. We offer support and encouragement for families of the class. Visitors are warmly welcomed.

**Watermark – The Connection Center Room 460**

We are couples, 40 and up, with teenagers. We study scripture using a Bible study guide or stand-alone lessons. Members take turns leading our small, interactive group.

**Young Adults – Library (A104)**

For young adults in their 20's and 30's. We usually have 10 to 15 folks who get together on Sundays to study a variety of topics from Romans to the Disciples and everything in between. We always open the Bible and we always have fun.

**Good News** – Room D220, at 11:00 a.m.

We are mostly couples, ages 50 and up, who are members of this class. Varied class lessons including lecture and spirited discussions are taught by our members and outside teachers. Outreach includes Soupmobile, Larkin Center, MAM, etc. Varied social activities are enjoyed also.

**Thursday Night Class** – The Connection Center Room 460, 7:15 p.m.

## **Sunday School Classes for Children, 9:30 a.m.**

Contact Donna Reed ext. 132 [donnareed@mdumc.org](mailto:donnareed@mdumc.org)

### **Nursery**

Nursery care is available for infants (first set of shots accomplished) and toddlers from 8:00 a.m. until 12:00 noon every Sunday. The nursery suite is located in the C hallway, which is on the south side of the building.

### **Pre-school**

Preschool classes are offered at the 9:30 a.m. hour, in the C & D wing. Additionally, if children need to arrive prior to that or if they need to remain after the 9:30 hour, they will be cared for in the church nursery. You may register your child on the children's website [www.mdumckids.org](http://www.mdumckids.org), or stop by the children's office located in the C-hallway.

### **Kindergarten through Fifth Grade**

School-age classes are held during the 9:30 hour. Special classes include Third Grade Bible Academy, located on the C hallway, and Christ.com for Fourth and Fifth grades, located on the second floor B hallway. You may register for children's Sunday School on the children's website, [www.mdumckids.org](http://www.mdumckids.org), or stop by the children's office located in the C-hallway.

### **Super Sixers**

Sunday School for sixth graders is located in the Scout Hut building at the 9:30 hour. Most of these children participate in confirmation during the sixth grade year in conjunction with Sunday School. For more information contact Tricia Wagner at 713 468 8356, [triciawagner@mdumc.org](mailto:triciawagner@mdumc.org).

## **Sunday School Classes for Youth, 9:30 a.m.**

Contact Steve Cragg ext. 155 [stevecragg@mdumc.org](mailto:stevecragg@mdumc.org)

### **Middle School, 7<sup>th</sup> & 8<sup>th</sup> Grade**

Mid-hi Sunday School meets at 9:30 a.m. on the second floor of the Family Life Center. For specific information about this age group and room locations contact Lynell Kennedy at [lynellkennedy@mdumc.org](mailto:lynellkennedy@mdumc.org).

### **Senior High, 9<sup>th</sup> – 12<sup>th</sup> Grade**

Sunday School for high schoolers meets on the second floor of the Family Life Center at 9:30 a.m. For specific information about this age group and room locations contact Sedonia Finstad at [sedoniafinstad@mdumc.org](mailto:sedoniafinstad@mdumc.org).

# Programs & Ministries of MDUMC

*Memorial Drive United Methodist Church is a growing community of God's holy people bound together and empowered by Christ's Spirit to grow in faith, joy, love and service to all as a transforming witness in the world. We reflect this by loving God and loving our neighbor. Our prayer is that the ministries and programs of Memorial Drive United Methodist Church reflect this purpose, and provide meaningful ways to worship, grow, witness and give.*

## Men's Ministry & the Journey Community

Contact Rev. Daniel Irving ext. 199 [danielirving@mdumc.org](mailto:danielirving@mdumc.org)

### Wednesday Men's Breakfast Group (Men of Action)

This group meets for breakfast and a program every Wednesday in Wesley Hall at 7:00 a.m. The purpose of the group is to provide fellowship and growth for the men of the church.

### Annual Golf Tournament

The MOA Golf Tournament is held in early May every year. Proceeds raised go toward scholarships for our graduating college-bound senior high youth. Everyone is welcome to play and hole sponsorships are encouraged.

### The journey Community

*The journey* is a worship community with a contemporary feel. This community meets on Sunday mornings at 11:01 a.m., in Wesley Hall. In June of 2010 *the journey* will move to a new location, The Well, located at The Connection Center. Bible studies and small groups meet on a regular basis in the evenings during the week and people of all ages participate in worship, study and fellowship together.

## Women's Ministry

Lynet Dunn ext. 133 [lyneddunn@mdumc.org](mailto:lyneddunn@mdumc.org)

### United Methodist Women (UMW) (meets September – May)

A multi-generational group of women whose focus is mission outreach to women and children in need. Their annual fundraiser, Hearts & Hands Holiday Market raises over 40K each year and utilizes over 100 partners-in-ministry. General Meetings of are held most months offering guest speakers from various mission organizations. Small group meetings, called circles, offer the opportunity for more intimate fellowship and programs.

### Women's Bible Studies

3 semesters are offered each year, fall, spring & summer. Curriculum varies, but each study is appropriate of novice and experienced Bible students alike. The leaders are gifted and engaging and classes are offered at both morning and evening times. Childcare is always included and classes are made up of diverse groups of women.

### **Footnotes (meets August – May)**

Meeting 9 months of the year, Footnotes offers women a time to discuss great books and enjoy time with one another. Books are pre-selected.

### **Women's Retreat**

Held each spring, women travel to get away from their busy lives and find some quiet time to be together and with God. Lovely accommodations and delicious meals are just the beginning of this fabulous time away. Spiritual renewal is the best gift received, but many new friendships are made each year. Fun and laughter abound.

### **Women's Dinner**

Over 400 women gather each year for an evening of dining, fellowship and a fabulous guest speaker. Over 40 tables, hosted and decorated by individuals create a lovely feast for the eyes. Creativity overflows as does fun and friendship. It is the "Do-Not-Miss" event of the year!

### **Dinner & A Movie**

Held quarterly on a Sunday afternoon, this program offers mostly recently released movies and dinner based on the theme of the movie. Following the feature presentation is a short discussion on the spiritual aspects of the movie. Insightful, inspiring, and highly enjoyable!

## **Welcome and Witness Ministry**

Joe Center    ext. 113    [joecenter@mdumc.org](mailto:joecenter@mdumc.org)

### **Ushers**

Ushers are an integral part of the welcome and witness of MDUMC. They volunteer on a rotational basis and are needed every time we worship. Folks of all ages are encouraged to participate.

### **Greeters**

There are two main greeting stations at MDUMC, in Friendship Court and in the narthex of the sanctuary. Volunteers man the greeter desks, answer questions and help guests and members who are seeking help. Additionally, greeters may be called upon to welcome folks to our campus when we have large, community gatherings.

### **Photo Journalism**

Photos are taken at nearly every event at MDUMC. These photos are shared with the congregation during worship, in *The Messenger* church newsletter, in the *Message*: church magazine, on the web, and on social media sites such as Facebook.

### **Hospitality**

From greeting guests on Sunday morning, to reporting events on social media and the website, hospitality is an all-encompassing effort. Partners-in-ministry are needed to help out in many ways.

# Singles Ministry

Sheri Kelley ext. 119 [sherikelley@mdumc.org](mailto:sherikelley@mdumc.org)

## Fabulous Fridays

Fabulous Fridays provide singles with a variety of fun and meaningful activities on the Fridays that start with the letter “F” – first, fourth, and fifth!

### *First Friday Flicks*

Singles gather to watch a contemporary movie in its entirety and then discuss it from a Christian perspective. Everyone is asked to bring a snack to share during the movie. Parents are invited to bring movies for the kids to watch in the next room.

Day: First Friday of each month at the west end of the Connection Center

Time: 6:45-10:00 p.m.; movie begins at 7:00 p.m.

### *Fourth Friday Kickback Koffee House*

Singles gather for live entertainment, snacks, cards, board games, Nintendo Wii, conversation, and Starbucks coffee. Children are welcome, but parental supervision is requested. Everyone is asked to bring a snack to share.

Day: Fourth Friday of each month at the west end of the Connection Center

Time: 8:00-10:00 p.m.

### *Fifth Fridays Theme Dances*

Singles from across Houston gather for theme dances. Complimentary appetizers are served. Parking lot security and a purse check are provided.

Upcoming dates

for the 5<sup>th</sup> Friday dances are April 30, July 30, and Dec. 31 (?).

## Learning with Other Singles

- Singles Community Bible Study

This is an ongoing group that meets weekly throughout the year. The course of study is determined by the group.

Day: Wednesday evenings in Room D127

Time: 7:15-8:45 p.m.

- Christian Singles Inquiring

This group looks in depth into issues of religion, philosophy, and more.

Day: 1<sup>st</sup> and 3<sup>rd</sup> Sundays in Room D127

Time: 5:30-6:45 p.m.

- Singles Enrichment Studies

Special life-application courses of study are held during the fall and the spring.

To find out what will be offered, check the Messenger or the website.

- Sunday School Classes

Single adults are members in all of the adult classes, but three are largely or completely made up of singles. These are the Ragamuffin class, the New Horizon class, and Kindred Souls. All meet at 9:30 a.m. on Sunday mornings.

## Interest Groups

Singles enjoy socializing with other singles with common interests. These activities are great opportunities to make friends with people who enjoy doing the same things you do!

- **Dining Interest Group (DIG)** – monthly dining adventures at Houston area restaurants

- **Day Trippin' Interest Group (DTIG)** – outings at interesting locations in and around Houston
- **Fine Arts Interest Group (FAIG)** – plays, concerts, operas, the Symphony, community theaters and more
- **Let's Get Physical Interest Group (LGPIG)** – tennis fun play & lessons, golf lessons, table tennis, volleyball, badminton, & attending sporting events
- **Missions Interest Group (MIG)** – general church-wide service & mission projects as well as those specifically for single adults

#### **Support for Singles**

- **Cracked Pots** - for survivors of abusive or destructive relationships; meetings on the 1<sup>st</sup> and 3<sup>rd</sup> Sundays at 1:30 p.m. in D216; contact [Jennings.debra@gmail.com](mailto:Jennings.debra@gmail.com)
- **DivorceCare** - Thursdays at 6:00 p.m. in D221
- **Grief Share** - Thursdays at 6:00 p.m. in D222
- **Survivors of Romantic Deception** - phone ministry; call 713-468-8356, ext. 119

#### **Spring & Fall Candlelight Dinners**

Come enjoy a delicious catered dinner by candlelight along with an enlightening and inspirational presentation. Join other singles from the Houston area as we come together in Christian fellowship. The fall dinner is slated for Nov. 21, 2010.

#### **Mount Sequoyah Jurisdictional**

Every fall, singles from the eight states of the South Central Jurisdiction gather in Fayetteville, AR at Mount Sequoyah Conference & Retreat Center to hear a fabulous speaker, attend wonderful workshops, and sing along with outstanding musicians. The retreat is traditionally held on the first weekend in November. Transportation from Houston is provided. For more information, go to [www.sequoyahsingles.org](http://www.sequoyahsingles.org).

## **Youth/College Ministry**

Steve Cragg    ext. 155    [stevecragg@mdumc.org](mailto:stevecragg@mdumc.org)    [www.mdumcyouth.org](http://www.mdumcyouth.org)

#### **United Methodist Youth Fellowship, Sunday evenings**

Youth groups for both mid and senior high schoolers meet in the Family Life Center, at The Refuge at The Connection Center, or in family's homes. Food, fun, fellowship, Bible study! These groups are well attended and friendly – a great place to make new friends.

#### **Summer Work Camps for mid and senior high**

Work camps take place in June. Senior High Work Camp has over 200 folks in attendance each year and the mid high camp usually has about 100. Students are asked to earn their way to camp by collecting service points through mission outreach and other activities. Senior high work camp takes place out of town, usually a bus ride away, and is well supervised by adult chaperones. Mid-high work camp stays in town and works locally, with a culminating overnight out of town. Work Camp is one of the community's most popular and meaningful events for youth of all ages.

### **Retreats – fall and spring**

Spiritual life retreats are held in the fall and the spring at encampments around the Houston area. Opportunities for growth and commitment to Christ and Christ's work in the world, highlight these events and lives are changed.

### **Bible Studies for girls, guys**

Weekly studies are ongoing for guys and girls, both high school and middle school age. Additionally, a Bible study for moms of youth takes place weekly at The Refuge.

### **Mission Outreach**

One of the strongest features of MDUMC's youth ministry is its emphasis on mission. Examples are feeding the homeless downtown, serving breakfast at St. John's Daybreak Center, working on special projects, helping rebuild homes damaged by Hurricane's Ike and more.

### **The Refuge**

The Refuge is MDUMC's youth center located at The Connection Center. It's open for use after school most days, and it's open for dinner every Tuesday evening, called "Fat Tuesdays". Additionally, the Refuge is used for parties, concerts and other large gatherings. It's a state-of-the-art space for kids.

### **Middle After-school Program for kids in middle school (MAP)**

Kids who need a safe place to be after the middle school day, can register for MAP. They are picked up from Spring Forest and Memorial Middle School and they are brought to the Family Life Center or The Refuge. Contact Lynell Kennedy for information, [lynellkennedy@mdumc.org](mailto:lynellkennedy@mdumc.org).

### **Seasonal college activities and visits to campuses across Texas**

Every effort is made to maintain contact with the youth as they graduate and scatter across the country for college. Gatherings are scheduled at Christmas and other holidays. Additionally, there is a college trip to Colorado each summer in late July.

## **Children's Ministry**

Donna Reed    ext. 136    [donnareed@mdumc.org](mailto:donnareed@mdumc.org)    [www.mdumckids.org](http://www.mdumckids.org)

### **Sunday School and Nursery Care for ages 0 through 6<sup>th</sup> grade at 9:30 a.m**

See Sunday School for Children

### **Summer Activities for All Ages**

Each spring parents are able to register their children for short term camps and fun events sponsored by Children's Ministry. Activities may include cooking classes, story time for preschoolers, a Grandcamp for grandparents and their grandchildren, and more. Information can be found on the Children's Ministry website, [www.mdumckids.org](http://www.mdumckids.org).

### **Vacation Bible School**

MDUMC's VBS takes place in July and has between 300 and 400 in attendance. VBS is for children Kindergarten through fifth grade. Preschoolers may attend if their parent is volunteering. This lively, spirit-

filled week is the highlight of the MDUMC summer experience. Information and registration are on the children's website. VBS always needs folks to sign up to teach or help out, as well.

### **Seasonal Events for Members and the Community-at-large**

**Candy Churches** – The first Sunday morning in Advent families gather in the gym to build candy churches. All goodies are supplied and beautiful churches are made from gingerbread and other delectable treats, delighting children and families alike. A great MDUMC tradition!

**Breakfast with Santa** – Traditionally held the second week in December on a Saturday, Wesley Hall is transformed into a Christmas wonderland, breakfast is served, and children have the opportunity to sit on Santa's knee. This event always has 100's of families and children in attendance.

**Easter Egg Hunt** – Known as our "Eastereggstravaganza", this event for members as well as the community, takes place the Saturday morning before Easter in Friendship Court.

**Trunk Treats** – Church members gather in the west parking lot on a Sunday evening around Halloween, and decorate their cars, open their trunks, and share candy with costumed children. Additionally, the Houston Concert Band entertains us with "spooky" music.

### **Confirmation Class for Sixth Graders**

Sixth grade children are encouraged to register for Confirmation class. Activities take place on Sunday mornings and evenings, as well as other times throughout the week. Confirmation begins meeting as a Sunday school class when school starts in August, and actual classes begin in October. The Confirmation class is confirmed in the spring. For additional information contact Tricia Wagner at 713 468 8356, ext. 136.

### **Third Grade Bible Academy**

Third graders enrolled in Sunday School are given a Bible at the beginning of the school year. Their Sunday School, called Third Grade Bible Academy, provides a year of curriculum specifically designed to familiarize children with their Bible and help them grow in the knowledge and love of God through the scriptures.

### **Christ.com (Sunday School for 4<sup>th</sup> and 5<sup>th</sup> graders)**

Rotational lesson plans where students learn through use of computers, through drama, cooking and other hands-on activities.

### **Special Needs Ministry**

- Nighlights (monthly baby sitting)
- Worship Ministries for children (acolytes, liturgical dance)

## **Weekday School and Fulltime Childcare**

Jerri Tetrault, Director    ext. 138    [jerritetrault@mdumc.org](mailto:jerritetrault@mdumc.org)

### **School for Little People Preschool for children age 2 ½ through pre-k**

Our church has offered a NAEYC-accredited preschool in the west Houston community since the 1960's. Registration is in February every year, for the

upcoming school year. Classes are offered 2, 3, 4, and 5 days a week, depending on the age of the child.

### **Mother's Day Out Toddler School for children age 11 months through 2 years**

Mother's Day Out is offered 1, 2, 3, or 5 days a week, from 9 to 2 p.m. The curriculum is designed so that children will begin to feel comfortable leaving the home and socializing with other young children. Play is the most important activity!

### **Extended Care for infants, toddlers and pre-schoolers**

MDUMC provides loving fulltime care for children age 3 months, through pre-K. The hours are 7 a.m., to 6 p.m., Monday through Friday.

### **Creative After-school Program (CAP) for children age K through 5<sup>th</sup> grade**

Children enrolled in CAP are picked up from local elementary schools after school each day, and transported to the church campus. Care lasts until 6:00 p.m.

### **Summer CAP fulltime care for elementary children**

Parents may register their elementary-aged children weekly throughout the summer for fulltime care.

### **Summer Day's Out Weekly Camps for preschoolers and toddlers**

Toddlers and preschoolers may register weekly for summer camp, held on the Memorial Drive campus. These camps are typically offered 4 different weeks spread throughout the summer.

## **Spiritual Formation**

Vicky Harris    ext. 129    vickyharris@mdumc.org

### ***The Well***

This publication can be found throughout the campus and is a comprehensive listing of all the studies and spiritual growth opportunities provided at MDUMC. It is published twice a year, fall and spring.

### **18 adult Sunday School classes for all ages and interests offered at 9:30 and 11:00**

A listing of classes is located in this booklet under the sub-heading **Adult Sunday School**.

### **Long-term Bible studies for adults**

Books of the Bible, Disciple Bible Study Series, Christian Believer and others long term studies comprise the backbone of adult learning. Registration takes place in late summer for these studies, which commence in the fall. They typically are concluded in May. These studies are listed in *The Well*, with a brief description and information on how to register.

### **Short-term Bible Studies and classes on a variety of topics for adults**

Many short-term studies take place throughout the year. They may be as short as a two or three week study, or last as long as six weeks. A variety of topics are offered, and these studies are designed to meet the needs of those whose time does not permit commitment to a long term study. These studies are listed in *The Well*, with a brief description and information on how to register.

## Programs and special events which encourage spiritual growth for all ages

- **Walk the Labyrinth**

Too busy to pray? Do you need some quiet time? Do you need time to listen to God?

For many of us, the labyrinth is a powerful walking path for reflection, meditation, and a deeper knowledge of God. Someone will be there to give directions and answer any questions you might have. Come, walk!

Day: Selected Sundays in the Gym

- **Walk to Emmaus**

Our church sponsored the Walks to Emmaus, which are spiritual retreats for men and women. Weekend retreats are usually held in spring and fall. Participation requires sponsorship by previous participants, so contact MDUMC's Spiritual Life Director, Vicky Harris, for more information.

- **Church Library**

Our church has an excellent library which houses both theological and secular writings. Excellent resources are available for research and Bible study, and for check out. The library is located in the administrative wing of the church and is open during regular business hours.

- **Gold Standard Training for adult teachers**

To ensure excellence in teaching, MDUMC offers a course for people who teach adults. After completion of the course participants are certified as trained adult educators and are listed as available to teach adult Sunday School and Bible study.

- **Lecture Series**

From time to time, special guests are invited to MDUMC, to share their expertise on a variety of spiritual topics. One such offering is the Harry Rankin Guest Lecture series, offered every other year. These guests are outstanding in their field and the lectures and seminars are always well attended by members and the community at large.

## Caring Ministry

Rev. James McPhail ext. 131 [jimmcphail@mdumc.org](mailto:jimmcphail@mdumc.org)

Sheri Kelley ext. 119 [sherikelley@mdumc.org](mailto:sherikelley@mdumc.org)

Rev. Susan Wiley ext. 161 [susanwiley@mdumc.org](mailto:susanwiley@mdumc.org)

The following is a listing of all the caring ministries currently offered at Memorial Drive United Methodist Church. If a specific contact person is not listed, please contact one of the directors listed above. Most of these groups welcome new members.

**A.A. "High Hopes"** – women's group meets Mondays at 11:00 a.m. in F223-224 (Sheri)

**A.A. "Gratitude in Action"** – Mondays at 7:00 p.m. in F223-224 (Sheri)

**ADDults** – 3<sup>rd</sup> Mon at 7:00 p.m. in D218 (Sheri)

**Al-Anon "Town & Country discussion AFG"** – Thursdays at 8:00 p.m. in D219 (Sheri)

**Alzheimer's Support Group and Gatherings** - each group meets monthly at the Connection Center, contact Nancy & Bill Rawl at 713-461-3861 (Jim)

**Blood Donor Ministry** – quarterly blood drives at the church (Jim)

**Career Assistance Ministry** – Mondays at 9:00 a.m. in D220, contact Will Darroh at [wddarroh@pipermorgan-aei.com](mailto:wddarroh@pipermorgan-aei.com) (Sheri)

**Children in the Middle** – 1<sup>st</sup> Sunday of the month at 1:00 p.m. in D126, call 713-468-0500 (Sheri)

**Chronic Pain & Illness Support Group** – 1<sup>st</sup> and 3<sup>rd</sup> Thursdays at the Connection Center at 4:00 p.m. (Sheri)

**DivorceCare** – Thursdays at 6:00 p.m. in D221 (Sheri)

**Family & Friends of Gays & Lesbians** – 7:00 p.m. in D216 on the 2<sup>nd</sup> Thursdays of the month, contact Norma at 281-920-9555 (Sheri)

**Food Addicts in Recovery Anonymous** – Sundays at 4:00 p.m. in D217 and Tuesdays at 7:00 p.m. in D222, contact Evelyn at 281-752-8061 (Sheri)

**Grief Share** – Thursdays at 6:00 p.m. in D222 (Sheri)

**Home Bound Communion** – starting first quarter of 2010 (Jim)

**Hummingbird Ministry** – for domestic abuse (Sheri)

- **Cracked Pots** – for survivors of abusive or destructive relationships; meetings on the 1<sup>st</sup> and 3<sup>rd</sup> Sundays at 1:30 p.m. in D216, contact [Jennings.debra@gmail.com](mailto:Jennings.debra@gmail.com)
- **Survivors of Romantic Deception** – phone ministry; call 713-468-8356, ext. 119

**Medical Equipment** – provides medical equipment as long as needed, contact Barbara Leflar at the Connection Center at [barbaraleflar@mdumc.org](mailto:barbaraleflar@mdumc.org) (Jim)

**Medical Transportation** – provides rides for members to doctors' appointments and Hospitals (Jim)

**Military Support Group (MSG)** – for family & friends of those serving in the military or working overseas, meets on the 3<sup>rd</sup> Sat. at 9:30 a.m. at Skeeter's (Sheri)

**National Alliance on Mental Illness** – month meetings on the 3<sup>rd</sup> Mondays of the month at 7:00 p.m. in D126, contact Fifi at 713-465-8518 (Sheri)

- **Family-to-Family Class** on Wed., Feb. 3-Apr. 21, at 6:30 p.m. in D220

**Prayer Ministry** - The MDUMC Covenant Prayer Group offers prayer for those from whom they receive a request. Requests may be left in the collection plates on Sunday mornings or received on our website at [www.mdumc.org](http://www.mdumc.org). (Susan)

**Prayer Service** - A brief prayer service is held on the 1<sup>st</sup> Sunday of each month at 5:30 p.m. in Landrum Chapel. Intercessory prayers on behalf of others are welcome during this prayerful time together. (Susan)

**Prayer Shawl Ministry** - The Prayer Shawl Ministry lovingly creates prayer shawls to be given to persons who may be ill, experiencing a crisis, or celebrating a joy. Join the knitters on the 1<sup>st</sup> Tuesday at 1:00-3:00 p.m. in D219 or on the 4<sup>th</sup> Thursday at 7:00-9:00 p.m. in D216. All skill levels are welcome! (Susan)

**Stephen Ministry** - Trained Stephen Ministers are available for those who, during a stressful time, may need a caring, confidential supportive relationship. (Susan)

**Stroke Support Group** - meets weekly on Tuesdays at 10:00 at the Connection Center, contact Kay Callahan at 713-461-6704 (Jim)

**Wings** – grief support for children & youth sponsored by Houston Hospice, contact Marti Nelson at 713-677-7131 (Sheri)

## **Outreach and Missions**

Kristy Elmore      ext. 242      [kristyelmore@mdumc.org](mailto:kristyelmore@mdumc.org)

### **Larkin Community Center in Central Houston**

This outreach ministry is located in central Houston, at Larkin Street and T.C. Jester. They offer ESL classes, a daycare center, and a food pantry, among other ministries for this mainly Hispanic community.

### **Memorial Assistance Ministries (MAM)**

MAM, located in Spring Branch on Campbell Road, provides ESL classes, financial assistance and counseling, a resale shop, and many other services to people in need in Spring Branch. This organization is supported by our church as well as other churches in the Spring Branch/Memorial area, through monetary contributions as well as volunteer manpower.

### **Soupmobile Sack Lunch Ministry**

The Soupmobile ministry has been a part of Memorial Drive for decades. Sack lunches are made and delivered to Houston's hungry on Thursday's and Saturday's, 52 weeks a year. Sunday School classes and other small groups make and deliver the sack lunches to several different locations in central Houston and Alief. On the first Sunday of the month, we collect funds specifically to support this ministry and we hold the Souper Bowl of Caring in February to fund the ministry, as well.

### **Homeless ministry**

MDUMC, through a partnership with Westside Homeless, helps folks who are in need of housing.

### **One Great Day of Service (OGDOS)**

One Great Day of Service, which is held one Saturday during Lent, is a church-wide event which sends folks out into the community to a variety of places to serve their neighbors. 400 partners-in-ministry or more participate in this annual day of service to others.

### **National and international mission projects for adults**

Our church encourages mission participation for every member and we send missionaries to destinations near and far. Typically, MDUMC sends missionaries to Cooksen Hills, Oklahoma, Mountain Top, Tennessee, Guatemala, Kenya, and Cuba, and Slovakia. Every year new trips are added and new folks participate, as we witness our love of God and neighbor.

### **Disaster Relief Teams**

When disaster strikes, MDUMC quickly sends response teams to areas in need. Reconstruction teams have responded to Hurricanes Katrina, Rita, and Ike, as well as to ther other natural disasters such as floods. A number of members have "First Responder" designations which allow them to be first on the ground in natural disasters.

## **Local Missions**

We support many local missions through hands-on partners-in-ministry work. Typical work consists of feeding breakfast to the homeless at St. John's Daybreak Center, helping at House of Amos in Alief, and many other local efforts and initiatives. Sunday School classes and other small groups within MDUMC, often work in local missions in the Houston area.

## **Community Assistance on Tuesday and Wednesday mornings**

Bus cards, gasoline vouchers, and food store gift cards are distributed on Tuesday and Wednesday mornings to the needy who come to the church looking for assistance.

## **Community Partnerships through Grants**

Every year our church awards thousands of dollars in grants to worthy non-profits in the Houston area. Through the awarding of these grants, we are connected to the grant recipients in far-reaching ways and our ministry extends well beyond the west Houston area.

## **Support for Schools – mentoring in SBISD elementary school and high school**

Our church provides mentors at Hollibrook Elementary School, a school located in a disadvantaged area of Spring Branch. We provide friendship to children in need of caring, stable adults in their life. We provide encouragement and support to the faculty and administrative staff, as well. We also provide mentors to high school students through Collegiate Challenge, at Stratford High School. This program helps students applying for college, many of whom are the first in their families to ever go to college.

## **Senior Adults**

Rev. James McPhail    ext. 131    [jimmcp@mail.mdumc.org](mailto:jimmcp@mail.mdumc.org)

## **Prime Timers**

Prime Timers is the name given to our senior adults. They are involved in all areas of the life and work of MDUMC. They particularly enjoy the many things they do together as a group, such as the monthly luncheons, weekly worship at the Senior Center at The Connection Center, monthly trips, etc.

## **Monthly Covered Dish Luncheons**

The fourth Thursday of the month, seniors gather in Wesley Hall for lunch and entertainment or special speaker. Lunch is covered dish, and the festivities begin at 11:30.

## **Monthly Day trips**

Day trips are taken to various points of interest throughout Houston and the surrounding community. Transportation is provided by bus, and a meal is usually a part of the day's **Weekly Lunch and worship at The Connection Center**.

## **Weekly Lunch and worship at The Connection Center.**

Lunch and worship are held each Thursday, noon, at the Senior Center at The Connection Center. The meal is provided by the church kitchen at a modest charge.

### **Game Day**

Seniors enjoy cards, dominos and other games weekly at the Senior Center at The Connection Center. This is usually held prior to Thursday noon worship.

### **Flower delivery team**

Each week the altar flowers are divided up and delivered to those in the hospital or members who are homebound.

### **Health and Wellness series**

Every month speakers lecture on topics relating to senior health and wellness. These lectures are free and are well attended. The speakers are experts in their fields and a time for questions and answers is always provided.

### **Homebound Communion**

Communion is provided monthly for homebound members. Lay partners, with pastoral blessing, provide communion for those who cannot attend church.

## **Young Adult Ministry & Evangelism**

Rev. Collin Taylor    ext. 130    [collintaylor@mdumc.org](mailto:collintaylor@mdumc.org)

### **Weekly Bible Study for young adults**

Young adults gather together on various evenings for a light dinner and Bible study.

### **Mission opportunities**

Mission opportunities are encouraged. Some are for young adults only. Some opportunities are in conjunction with church-wide offerings such as OGDOS.

### **Social gatherings and outings**

Young adults meet often for social gatherings such as bowling, ball games, meals at local hot spots, etc.

### **Young Adult Sunday School at 9:30 hour**

The young adults are currently meeting in the library at the 9:30 hour on Sunday. They study a variety of topics including Bible study and other contemporary Christian writings.

### **Ministry to Couples With Young Children**

Couples with Young children gather on the first and third Wednesday's of the month for a meal together. The children are then cared for in the nursery while the couples gather for Bible study.

### **Contact of Prospective Members of the Church**

Guests who attend worship and give the church contact information, are contacted via phone or email during the week. Questions about membership are answered and guests are encouraged to join the church if that is their desire.

### **New Member Welcome**

When new members join the church, they are greeted by partners who help the new members with necessary paperwork, answer questions, and welcome them to the church. The new member team is comprised of over 20 members.

### **Outreach to New Community Members**

Welcome gifts are distributed to folks new to the area.

# Justice and Mercy

Kristy Elmore ext. 242 [kristyelmore@mdumc.org](mailto:kristyelmore@mdumc.org)

## **The Metropolitan Organization (TMO)**

Memorial Drive United Methodist Church is a member of TMO, an advocacy group which seeks to build consensus among groups who may be at odds politically. It also seeks to make clear the issues of all people in need. TMO sponsors community meetings on such topics as immigration reform, health care, and other timely topics. For information, call Rev. Susan Wiley.

## **Restorative Justice Prison Ministry**

MDUMC provides volunteers who mentor men and women incarcerated in the Houston area. We also provide help for those recently released from prison so that they may transition back into society.

## **Guest speakers on topics of current interest**

At least once a year, the justice and mercy ministry invites a well-known speaker to share their knowledge through a seminar or lecture.

# Music & Fine Arts

Ann S. Ables, Director ext. 125  
Terry Tullos, Associate Director ext. 146  
Faith Hebard, Director of Children's Choirs  
Stephen Distad, Organist, Associate Director

[annables@mdumc.org](mailto:annables@mdumc.org)  
[terrytullos@mdumc.org](mailto:terrytullos@mdumc.org)  
[faithhebard@mdumc.org](mailto:faithhebard@mdumc.org)

## **Adult, youth and children's (K and up) choirs**

Choirs are available for all ages. The Chancel Choir is directed by Ann Ables and rehearses on Wednesday evenings. The Youth Choir, known as Agape Singers, is directed by Terry Tullos and rehearses on Sunday evenings. The Children's Choirs are directed by Faith Hebard, and they rehearse on Sunday afternoons. New members are welcome for every choir. Contact the directors for more information.

## **Accent on Music Concerts**

Concerts are offered on Sunday evenings, throughout the year. These concerts sometimes feature professional artists, and sometimes they feature talent from within our church. The concerts are always well attended both by members and the community-at-large. Most concerts are free.

## **Handbell choirs for 3<sup>rd</sup> grade to adults**

MDUMC has a handbell choir, the Memorial Bells, that is second to none! They rehearse on Wednesday evenings and are always looking for substitute ringers. We have a handbell choir, the Stars Bells, for children and youth, as well. They rehearse on Sunday afternoons. Contact Ann Ables for more information about these handbell choirs.

### **Orchestra, King's Brass and other instrumental ensembles**

Instrumental music is a growing ministry at our church. We have an orchestra, as well as various ensembles, all made up of lay members. These groups are directed by Terry Tullos. He is anxious to grow these groups and he invites folks to audition.

### **New Horizons Band**

In addition to the musical groups that participate in worship, MDUMC hosts a band for folks who are taking up an instrument for the first time, or are taking back up their instrument after a long lay off. This group is the New Horizons Band. Contact Terry Tullos for more information. New members are always welcome.

### **Accent on Visual Arts**

Display cases located in the administrative lobby and Friendship Court, house visual arts of all types. These displays change throughout the year. Occasionally local artists are featured, but often the visual displays are provided by our own members. Ann Ables arranges the visual arts displays.

### **Liturgical Dance**

From time to time, we offer classes and workshops on liturgical dance. Liturgical dance is used in worship several times a year and new dancers are needed and welcome. Contact Ann Ables.

### **Theater Arts**

The Theater Arts ministry has been a part of Memorial Drive for many years. Dramas and plays always have a Christian message and add to congregational spiritual growth. Often these plays use multi-media to enhance effects. New thespians are always needed. Contact Terry Tullos for more information.

### **Agape Singers**

This group of singers is made up of 6<sup>th</sup> through 12<sup>th</sup> graders. They sing in worship monthly and tour a musical every summer. New members are always welcome! Contact Terry Tullos.

### **Worship and Seasonal Décor during Advent**

This group adorns the church with beautiful seasonal decorations during Advent. They are responsible for all décor inside and outside. They also take down and pack away all the decorations after Christmas. Ann Ables oversees this group.

## **Recreation**

Kim Kennedy    ext. 156    [kimkennedy@mdumc.org](mailto:kimkennedy@mdumc.org)

### **Children's Soccer, Basketball, Baseball and Softball**

MDUMC is a member of the West Houston Christian League, which is made up of various churches in the community. We offer sports for boys and girls, ages 4 and up. Good sportsmanship is encouraged, prayers are said before the games, and everyone has the opportunity to play. Registration is handled through the Family Life Center office.

## **Tumbling**

Tumbling is offered weekly during the school year by The Tumbling Company. Children from the community as well as children enrolled in the Weekday School, participate in this lively, faith-filled program. Registration is taken through the Tumbling Company, 713 335 3500.

## **Dance**

Dance is offered by Sharon's Dance, for children aged 3 and up. Registration takes place prior to each school year. Drill Team camps are also offered in the summer.

## **Jazzercise**

Weekly Jazzercise classes are offered for adults. For more information contact the youth office in the Family Life Center.

## **Yoga**

Yoga is offered weekly by a certified Yoga instructor. Please contact the Family Life Center office for times, and cost.

## **Piano**

Piano lessons are offered several times a week. Please contact the Family Life Center office for more information.

## **Raquetball**

Raquetball courts are located adjacent to the Family Life Center lobby. You may sign up for court time by contacting the Family Life Center office.

# **Discipleship**

Rev. Susan Wiley    ext. 161    [susanwiley@mdumc.org](mailto:susanwiley@mdumc.org)

## **Discipleship of New Members through Navigate**

The Navigate program is designed to help new members learn about the many ways they can become involved in the life and ministry of MDUMC. The goal is deepen discipleship as members learn ways they can worship, grow, witness, and give.

## **Congregational Engagement**

Members are offered ways to engage in the life of the church. Examples are church wide dinners, called Dinners on the Ground, offered quarterly; church-wide initiatives such as Fat Tuesday celebration and 4<sup>th</sup> of July celebration; workshops which provide deepening of discipleship, etc.

## **The Disciple's Way**

The Disciple's Way is a devotional meditation that is emailed to the congregation. It is a commentary on our lives and varied journeys as disciples of Christ. It is available on the website as well, [www.mdumc.org](http://www.mdumc.org)

## **Prayer Team**

MDUMC has a prayer team who receives the weekly prayer requests submitted by members and non-members. The prayer team has covenanted to pray daily for these requests. In addition, the prayer team, along with others, gather the first Sunday of each month at 5:30, p.m., in Landrum Chapel, for a prayer service.

### **Prayer Shawl Ministry**

Members knit shawls, which are prayed over, then shared with people who might be in need of comfort. Often these shawls are given to folks who are hospitalized or who have recently suffered a loss. Thousands of shawls have been prayerfully knitted and shared since this ministry's inception.

### **Stephen Ministry**

MDUMC has a strong and active Stephen Ministry program. These lay people are partnered with individuals in a supportive and confidential relationship. Often, these care givers are recommended by clergy or others who may know of someone's personal need. These Stephen Ministry partnerships lead to healing and wholeness for those seeking such a relationship.

## **Media Ministry**

Tom Whitehurst    ext. 144    [tomwhitehurst@mdumc.org](mailto:tomwhitehurst@mdumc.org)

### **Technology Support for worship services and special events**

The media ministry provides tech support for every worship service – lighting, sound, filming, taping, broadcast, etc. Additionally, they support the large gatherings of the church with sound, power point slides, special lighting and affects, etc. They also support the needs of drama and music productions.

### **Creative Media**

Great stories can be told through using media creatively! The media ministry produces all the church's films, short videos, and power point slide presentations.

### **Taping**

All of the worship services are taped for future broadcast and copies of sermons are made available for member's purchase.

## **Pastoral Staff**

Dr. Charles B. Simmons, Senior Minister	<a href="mailto:chucksimmons@mdumc.org">chucksimmons@mdumc.org</a>
Reverend Suzy Reedstrom, Lead Associate	<a href="mailto:suzyreedstrom@mdumc.org">suzyreedstrom@mdumc.org</a>
Reverend Susan Wiley	<a href="mailto:susanwiley@mdumc.org">susanwiley@mdumc.org</a>
Reverend James McPhail	<a href="mailto:jimmcp@mail@mdumc.org">jimmcp@mail@mdumc.org</a>
Reverend T. Daniel Irving	<a href="mailto:danielirving@mdumc.org">danielirving@mdumc.org</a>
Reverend Collin Taylor	<a href="mailto:collintaylor@mdumc.org">collintaylor@mdumc.org</a>

## **Director of Programs & Communication**

Ellen Lee    ext. 118    [ellenlee@mdumc.org](mailto:ellenlee@mdumc.org)

## Questions you may encounter along your way:

### What is the Messenger?

The Messenger is our church newspaper. It's printed twice a month and is mailed directly to your home. It is also available on the church website at [www.mdumc.org](http://www.mdumc.org).

### What are all these acronyms?

Our church uses many acronyms to describe programs, places, and ministries. Even our name is often shortened to a letter version! The acronyms mentioned below are the most common ones you will hear or see in print.

- **MDUMC**=Memorial Drive United Methodist Church
- **SFLP**=School for Little People, the church's preschool (also sometimes known as Children's Weekday School).
- **LGLN**=Love God, Love Neighbor, our charge as a faith community
- **WGWG**=Worship, Grow, Witness, Give, ways we put Love God, Love Neighbor into action.
- **BOS**=Board of Stewards, the lay group that is the governing body of our church
- **FLC**=Family Life Center, the building on the main campus which houses the youth ministry, gym, and recreational activities. Its entrance is on the east side of the campus.
- **MOA**=Men of Action, which meets every Wednesday morning, 7:00 a.m., Wesley Hall.
- **UMW**=United Methodist Women
- **CAM**=Career Assistance Ministries, which meets every Monday, D220, 9:00 a.m.
- **OGDOS**=One Great Day of Service, which is held on a Saturday during Lent. It is a church wide event which sends folks out into the community to a variety of places to serve.

### I am in need of pastoral assistance. How do I reach a pastor?

If you are in need of pastoral assistance during the normal business hours, you may call the church number at 713 468 8356, and ask to speak to a clergy person. After hours or on the weekend, you may dial the church number and leave a message and call back number. The minister on call will be contacted and will return your call.

### Do we have a counseling service or a Licensed Professional Counselor on staff?

Our clergy are available to visit with members seeking spiritual guidance and they welcome your calls. However, if you are seeking a more permanent arrangement, our church has a relationship with Mariana Targhetta, MA, LPC, LMFT who is affiliated with Krist Samaritan Counseling Center. Their phone number is 281-480-7554. When you call them, tell them you are a member of MDUMC.

## **What is the Texas Annual Conference?**

As a United Methodist Church, we are part of a national connection. The United States is divided into conferences, each having its own bishop. Our conference is the Texas Annual Conference, which encompasses much of East Texas. Our current Bishop is Janice Riggle Huie. The Texas Annual Conference is divided into smaller geographic districts and we are part of the Southwest District

## **I'm interested in the day school – Who should I call?**

Please call the school's direct line at 713-425-6804. The school office can give you information about space availability, cost, and registration procedures.

## **I would like to dedicate the flowers on the altar.**

Members may dedicate altar flowers in honor of loved ones, to commemorate an anniversary, birth, a death, or for a variety of reasons. This opportunity is available on most Sundays during the year for a modest price. Call Sarah Smith in the church office, 713 468 8356, and she can explain the procedure and assist you. Flower dedication is always listed in the Sunday worship bulletin.

## **I would like to have a wedding here – How do I do that?**

The church has a wedding coordinator whose job is to schedule weddings, assign clergy, and educate folks on our policies. You may request a specific minister to perform the wedding and the coordinator will do her best to meet your request. Our policy includes fees, rules and regulations. Before you go forward with any plans, make sure that your wedding date and minister are secured! Call the main church number at 713 468 8356, and ask to speak to the wedding coordinator.

## **I would like to have my baby/child baptized.**

MDUMC baptizes infants at all services, most Sundays during the year. Please speak with Sarah Smith, the Senior Minister's administrative assistant, to schedule a baptism. Should you have an older child in need of baptism, Sarah will also make those arrangements.

## **Who do I call to schedule a funeral? Can MDUMC have funerals for non-members?**

You may call one of the ministers directly to schedule a funeral or memorial service. Or you may contact Sarah Smith, the Senior Minister's administrative assistant, in the church office and she will notify the clergy of your need. Should you make a request for a specific clergy person and they are not available, arrangements will be made for someone to officiate. Additionally, our church has a funeral guild, whose job it is to help the family the day of the service, act as ushers and greeters during the service, and host at the reception after the service, should you have one. Services are arranged for both members and non-members.

## **Who do I contact about a change of address?**

It is important that the church keep current contact information on every member. If you have a change of address, phone, or email, please contact the membership secretary in the church business office, 713 468 8356.

## **I would like to use one of the classrooms at the church for a special meeting**

Use of the church's space for outside events is limited. All outside events must be sponsored by a program staff member and be approved by the church business manager as well as the Director of Programs.

## **I'm going into the hospital. Does the church need to know?**

Yes! Federal law prohibits hospitals from informing us so you or your family must let us know. It is our hope to provide you pastoral care and often the church does not hear about folks who are hospitalized. You may call Sarah Smith, the Senior Minister's administrative assistant, and she will inform the ministers.

## **Can I advertise my business or my services at the church?**

No.

## **I've lost something.**

The reception desk in the administration lobby contains a lost and found. If you leave something behind in the sanctuary the ushers will bring it to the reception desk for safe keeping. Additionally, if something is left in the Family Life Center, it is often turned in at the youth office in the Family Life Center. Also, the Weekday School maintains a lost and found for items left in the children's classrooms.

## **What is the Board of Stewards?**

The Board of Stewards is the lay governing board of our church. It's responsible for approving our church's annual budget as well as any capital campaigns and special projects. It's made up of lay people active in the congregation who are nominated by a Nomination Committee. Members serve a term of three years. The Board of Stewards meets four times a year in Wesley Hall, 6:30 p.m., and any church member may attend. Only Board of Stewards members may vote, however.

## **Why do the classrooms have different letters in front of the classroom numbers?**

Our church is made up of several buildings, or wings. Each room designation is noted with a letter indicating the wing and then a number indicated which room. The "A"

building contains the administrative offices, the music suite and the library. The “B” wing contains children’s classrooms which are located on the east side of the campus. The “C” wing contains children’s classrooms located in the middle of the campus, as well as the Weekday School office and the Children’s Ministries offices. The “D” wing houses children’s classrooms on the first floor and youth and adult classrooms on the second floor. Additionally, the Family Life Center, gym, Wesley Hall, and Friendship Court make up the newest areas of our building.

## **How do I find my way around this large building?**

Campus maps are up on the walls at the main entrances to the campus. Maps are also available in brochure form, throughout the building. Also, there is a tour of the campus which starts in the narthex at 10:30 a.m. on specifically announced Sundays. Watch the Messenger for details of the tour.

## **Is there a columbarium located on this campus?**

Our campus has a columbarium, called the Memorial Garden, located in the courtyard just east of the sanctuary. Funds generated from the purchase of space in the Memorial Garden, go into the church’s Caring Forever Foundation.

## **Where do I drop my child or youth off for Sunday School?**

Please stop off at the Children’s office, located in the “C” hallway, and they can direct your child to the appropriate Sunday School Class. Your youth may stop by the youth office located in the Family Life Center.

## **How do I find an adult Sunday School class?**

Descriptive listings of adult Sunday School classes are posted on the bulletin boards all around the campus, as well as the on church’s website, [www.mdumc.org](http://www.mdumc.org). It is a good idea to try several, as each class has its own feel and personality. You may contact the Director of Spiritual Formation, Vicky Harris, for information about adult classes, as well.

## **How do I make a financial contribution to the church?**

Offering envelopes are available in the pew racks, as well as in the narthex of the sanctuary. Place your contribution in the offering plate when it is passed during the service. Or you may mail your contribution directly to the church. You may also contribute online at [www.mdumc.org](http://www.mdumc.org). There are many types of giving besides cash contributions, so contact the church’s business manager, Jon Gray, 713-468-8356, for more details about ways to give to our church and its many ministries.

## **What is the Refuge?**

The Refuge is located at The Connection Center, just west of the main church campus. The Refuge is a state-of-the-art youth center, used mainly by our youth ministry. Everyone, young and old, is invited for breakfast each Saturday, however.

## **What is the Connection Center?**

The Connection Center is a second campus of Memorial Drive United Methodist Church, located just west of the main campus, on Memorial Drive. It currently houses a Senior Center for senior adult activities, as well as a youth center, called The Refuge. In early summer 2010, The Well will be put into operation, housing our journey worship community (contemporary worship), as well as provide space for drama and fine arts. Currently it houses commercial space such as T.J. Maxx, as well as space for MDUMC ministry. Eventually, it will be used entirely for ministry space.

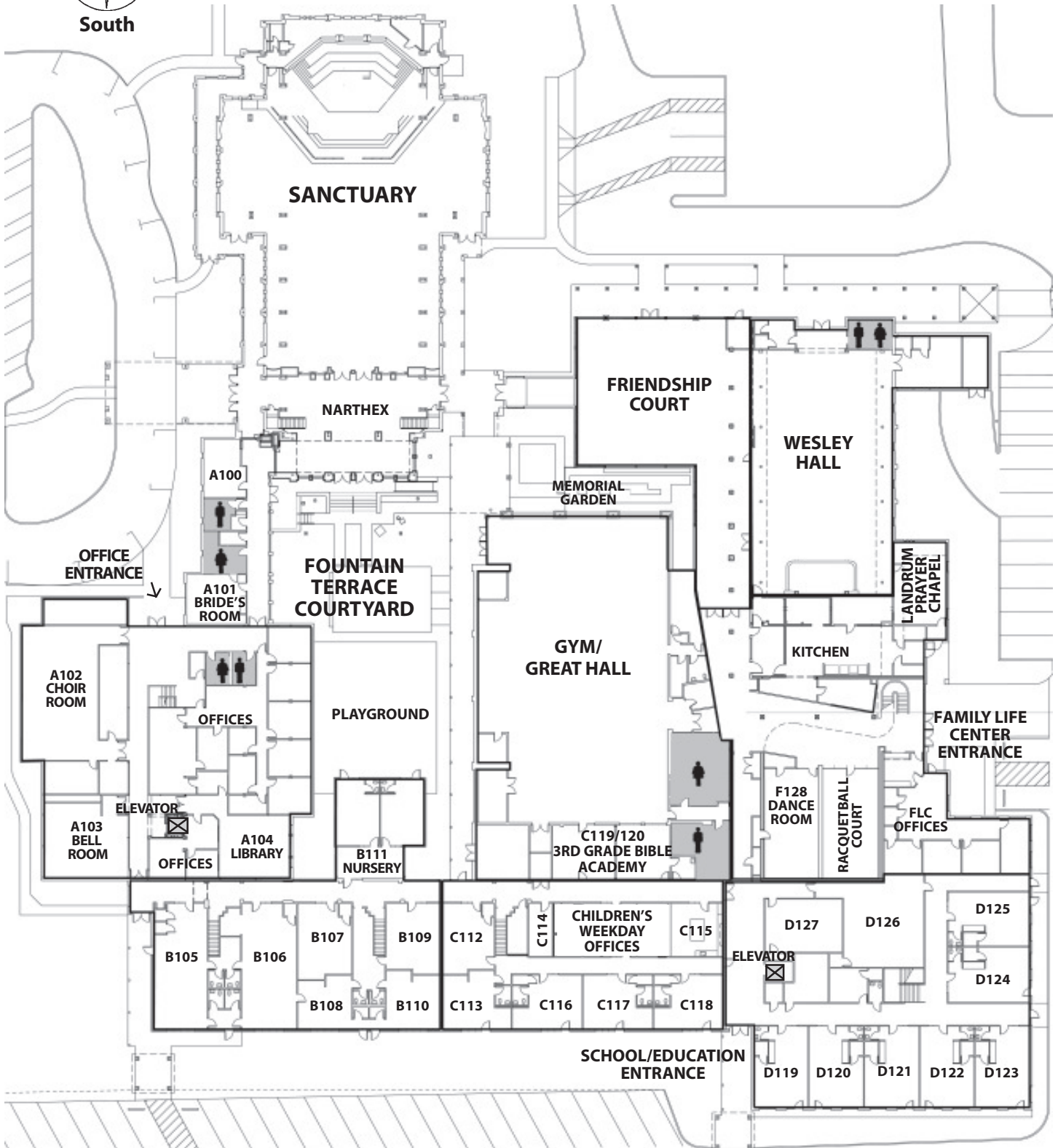
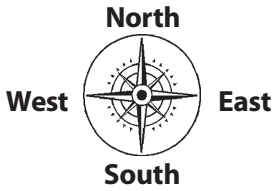
## **I'd like to volunteer my time. What could I do?**

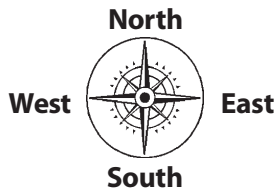
We are always in need of people to assist in the church's administrative office. Tasks include entering membership information into the church's data base, filing, preparing large mailings, preparing the church's newsletter for mailing, etc. If you would like to participate, please contact the church membership secretary or Ellen Lee. When engaging in the work of the church, we consider you to be a partner-in-ministry and your services will gladly be accepted! Also, if you have a technological bent, you might want to help in our media ministry. The media ministry is responsible for sound, lights, and broadcast of our worship services. Contact Tom Whitehurst if you would like to know more.

## **Other questions?**

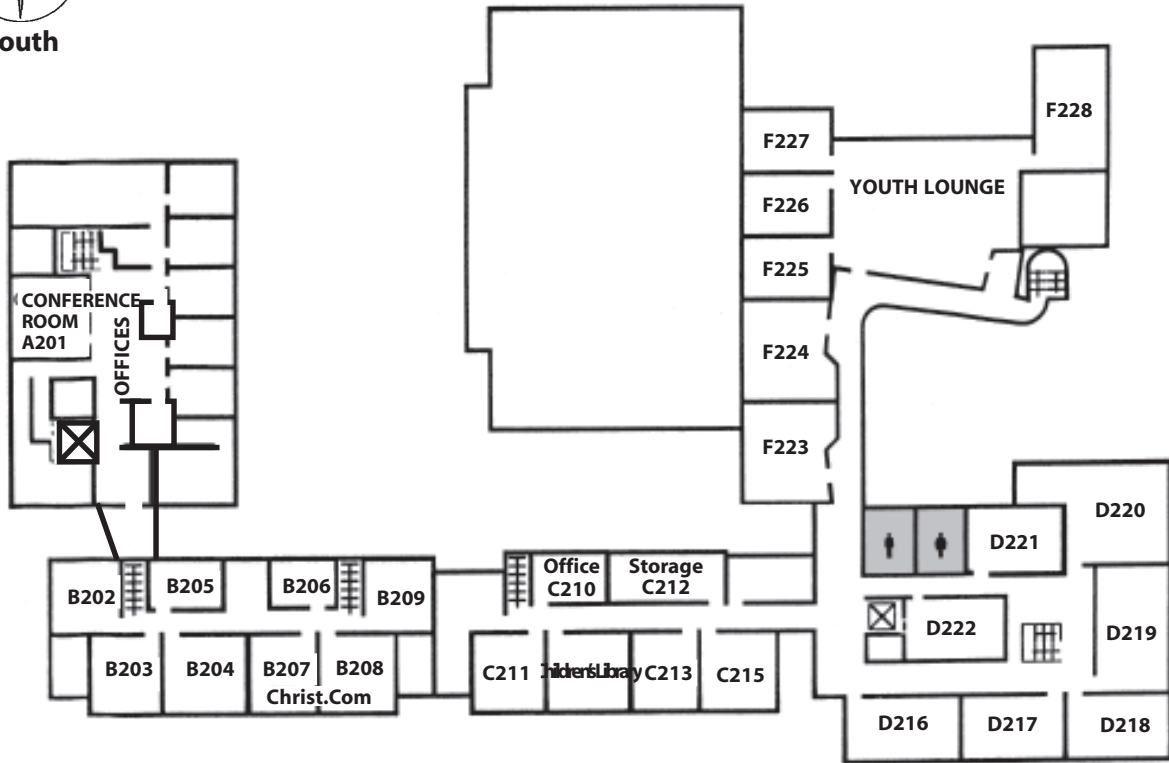
Contact Ellen Lee, Director of Programs and Communication at 713-468-8356, [ellenlee@mdumc.org](mailto:ellenlee@mdumc.org). She will be happy to answer your question or better yet, direct you to someone who can answer your question.




# FIRST FLOOR





# SECOND FLOOR

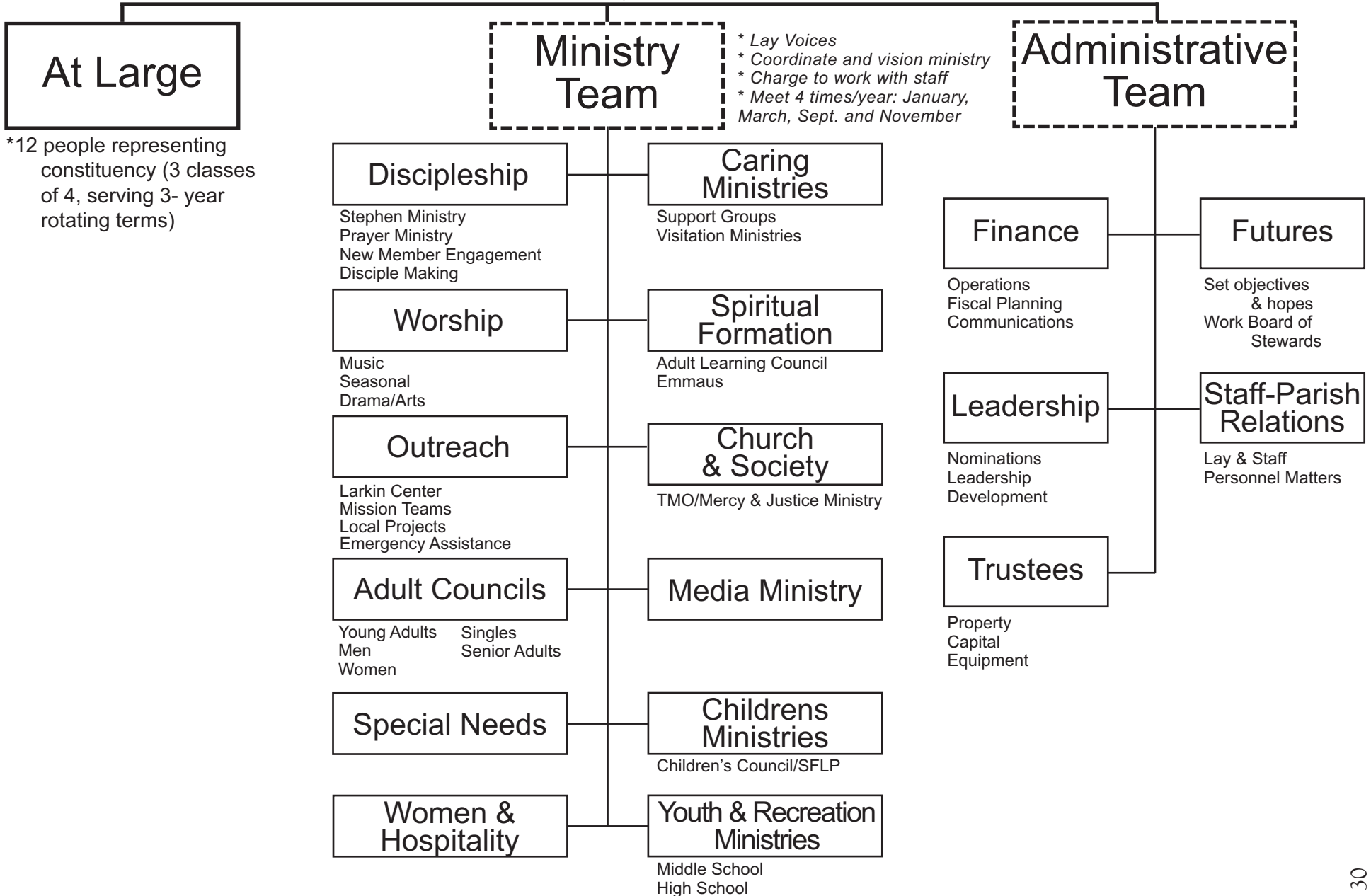


-  Elevator
-  Restrooms
-  Stairs

Memorial Drive   
United Methodist Church

# CHURCH COUNCIL

- \* Convened by Chair of Board of Stewards
- \* Vice-Chair convenes Ministry Team
- \* Meet 5 times/year



# Quick Reference Guide

**Church number:** 713-468-8356

Childrens' information ask for Donna Reed or Tricia Wagner

Youth information ask for Steve Cragg

Adult learning ask for Vicky Harris or Ruth Donaho

Music and Fine Arts ask for Ann Ables or Terry Tullos

Recreation ask for Kim Kennedy

Business/financial ask for Jon Gray or Jody Griggs

Missions and Outreach ask for Kristy Elmore

Address/phone/email change, ask for Judy Brewer

Births of child ask for Judy Brewer

Altar flowers, deaths, baptisms ask for Sarah Smith

Lead Associate Pastor ask for Rev. Suzy Reedstrom