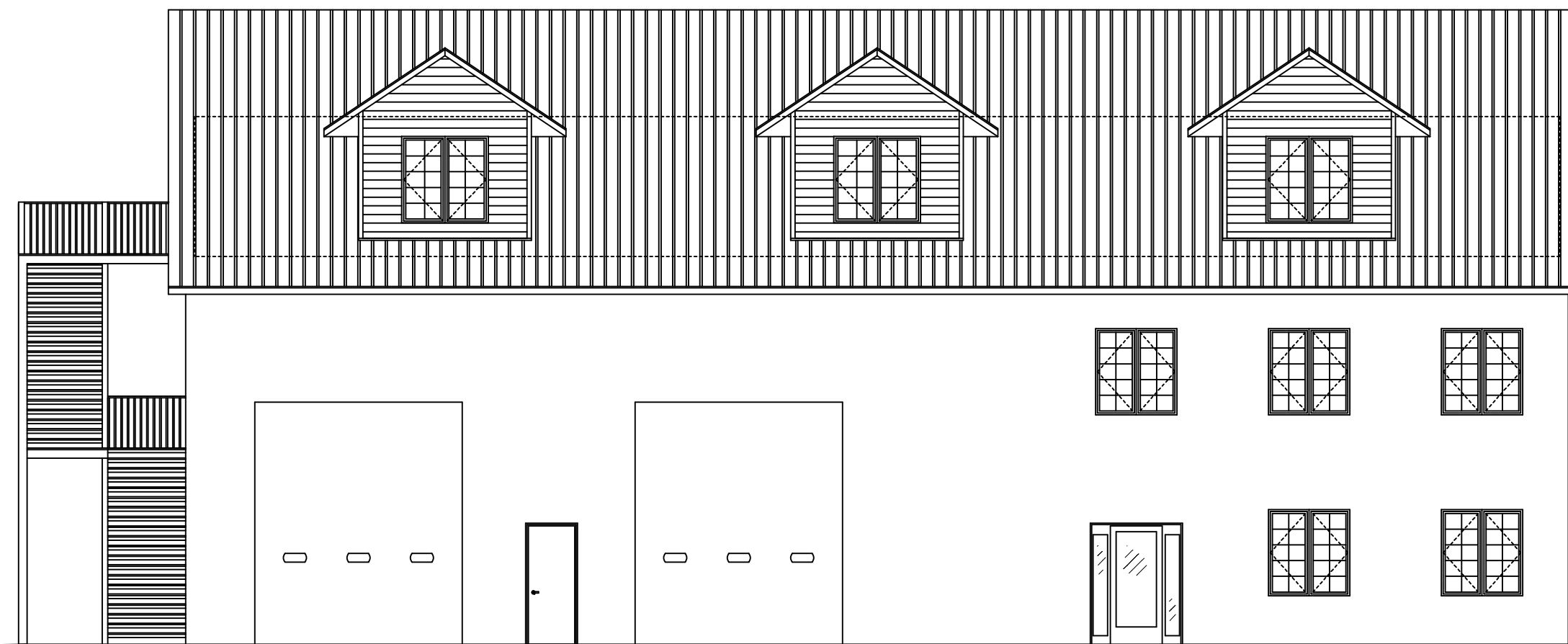
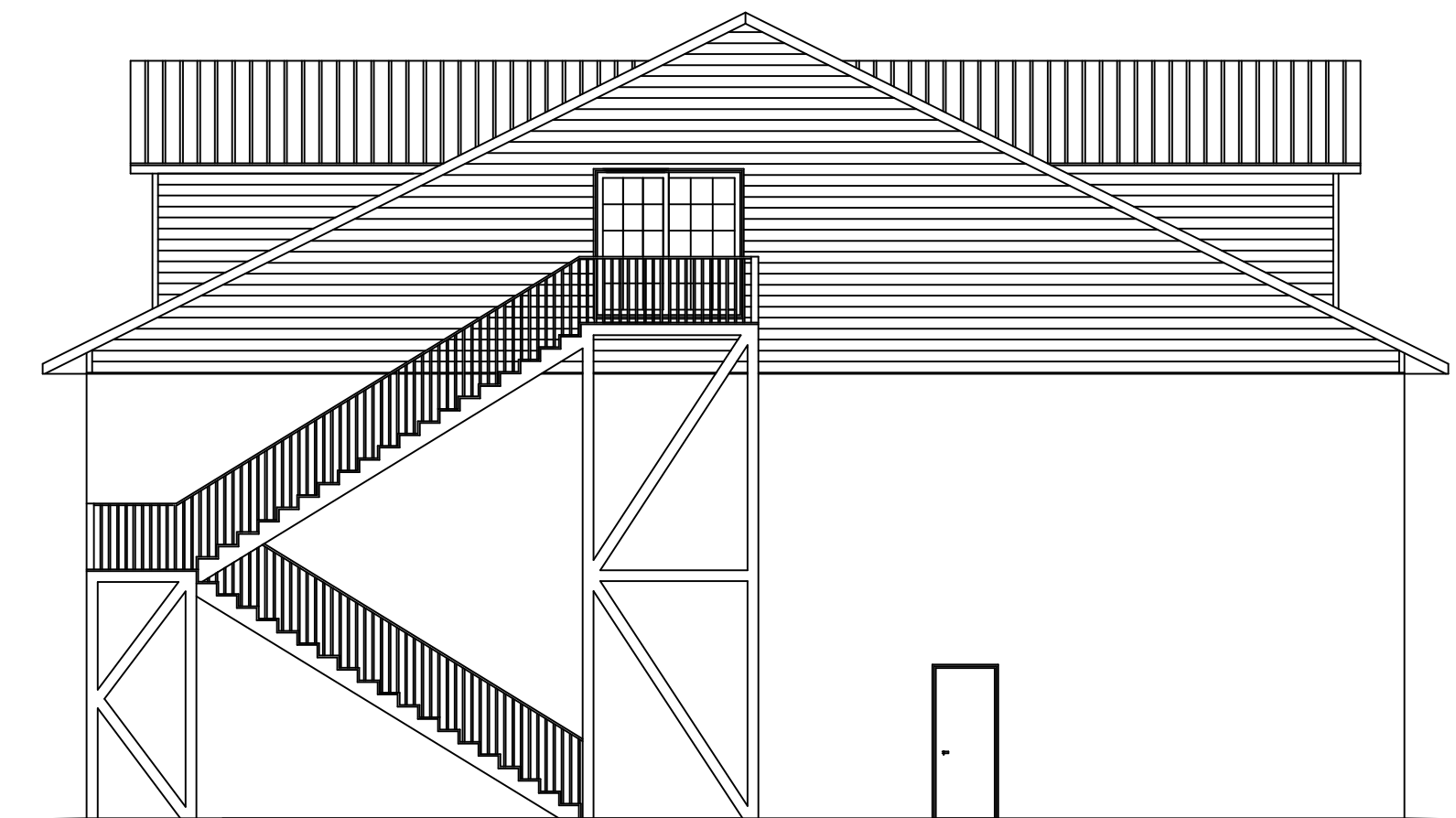


WEST ELEVATION
SCALE: 1/8" = 1'-0"



NORTH ELEVATION
SCALE: 1/8" = 1'-0"



EAST ELEVATION
SCALE: 1/8" = 1'-0"



SOUTH ELEVATION
SCALE: 1/4" = 1'-0"

ROUGH CEILING HT.
EL= 130'-6 1/4"

TOP OF SUB-FLOOR
EL= 122'-5 1/8"

TRUSS BEARING
EL= 120'-4 3/8"

TOP OF SUB-FLOOR
EL= 111'-5 1/8"

FLOOR TRUSS BEARING
EL= 109'-2 3/8"

TOP OF FINISH FLOOR
EL= 100'-0"

BOTTOM OF FOOTING
EL= 95'-6 1/8"

TOP OF SUB-FLOOR @ ROOM #118
EL= 112'-4 3/8"
FLOOR TRUSS BEARING @ ROOM # 110/118
EL= 111'-1 5/8"