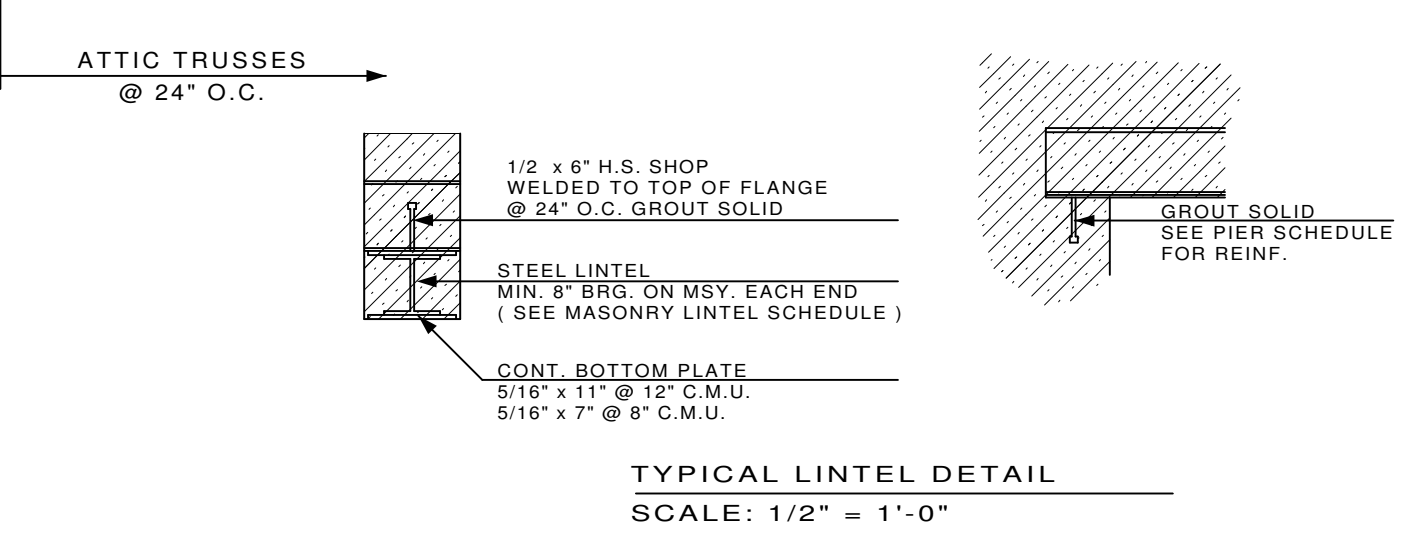
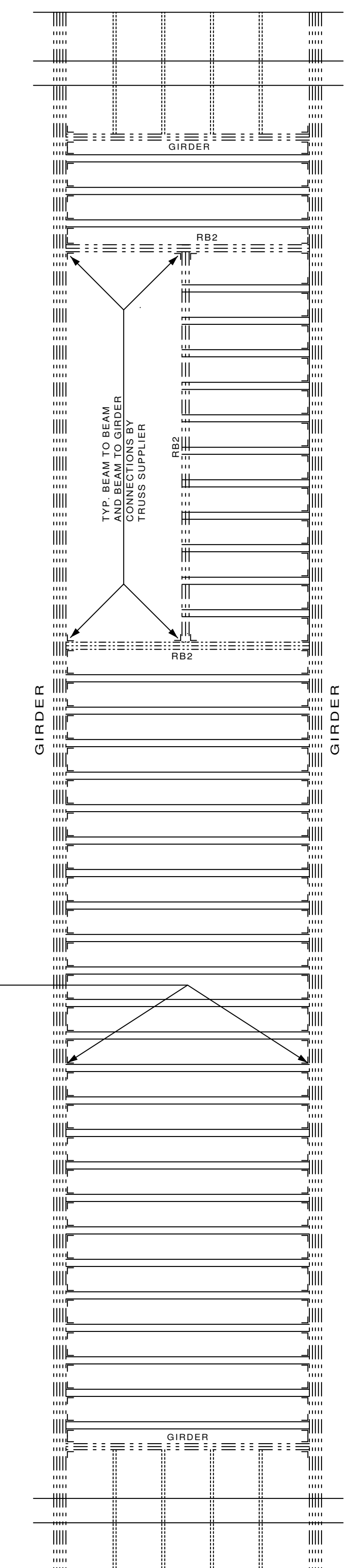
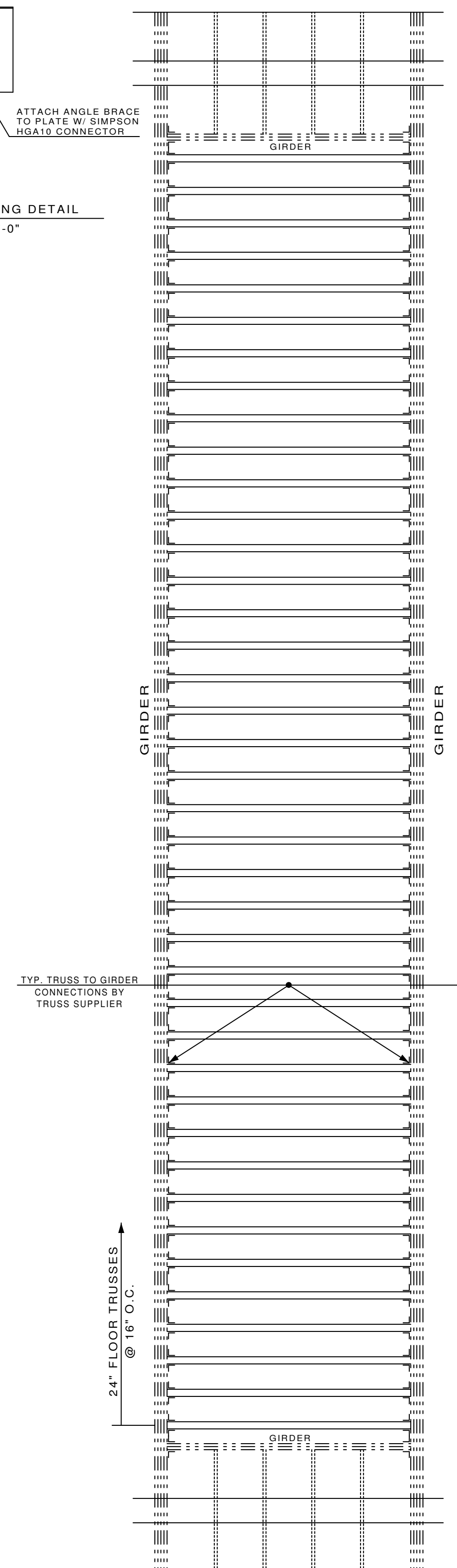
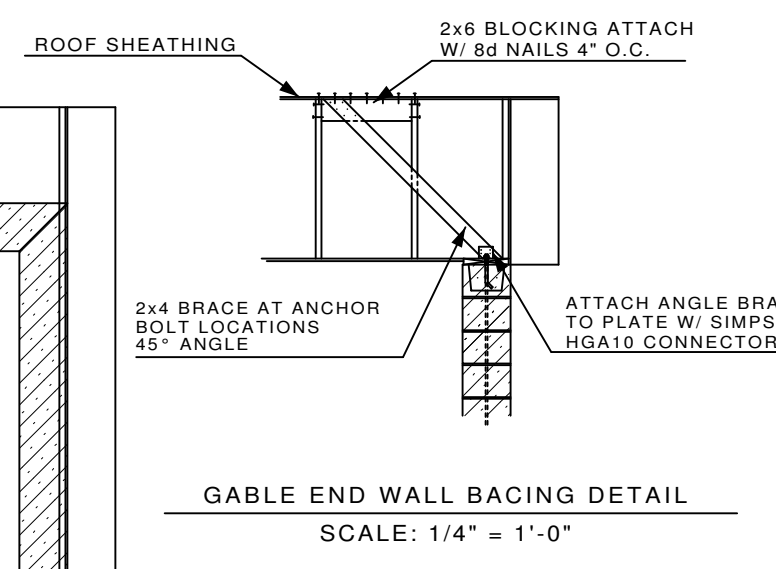
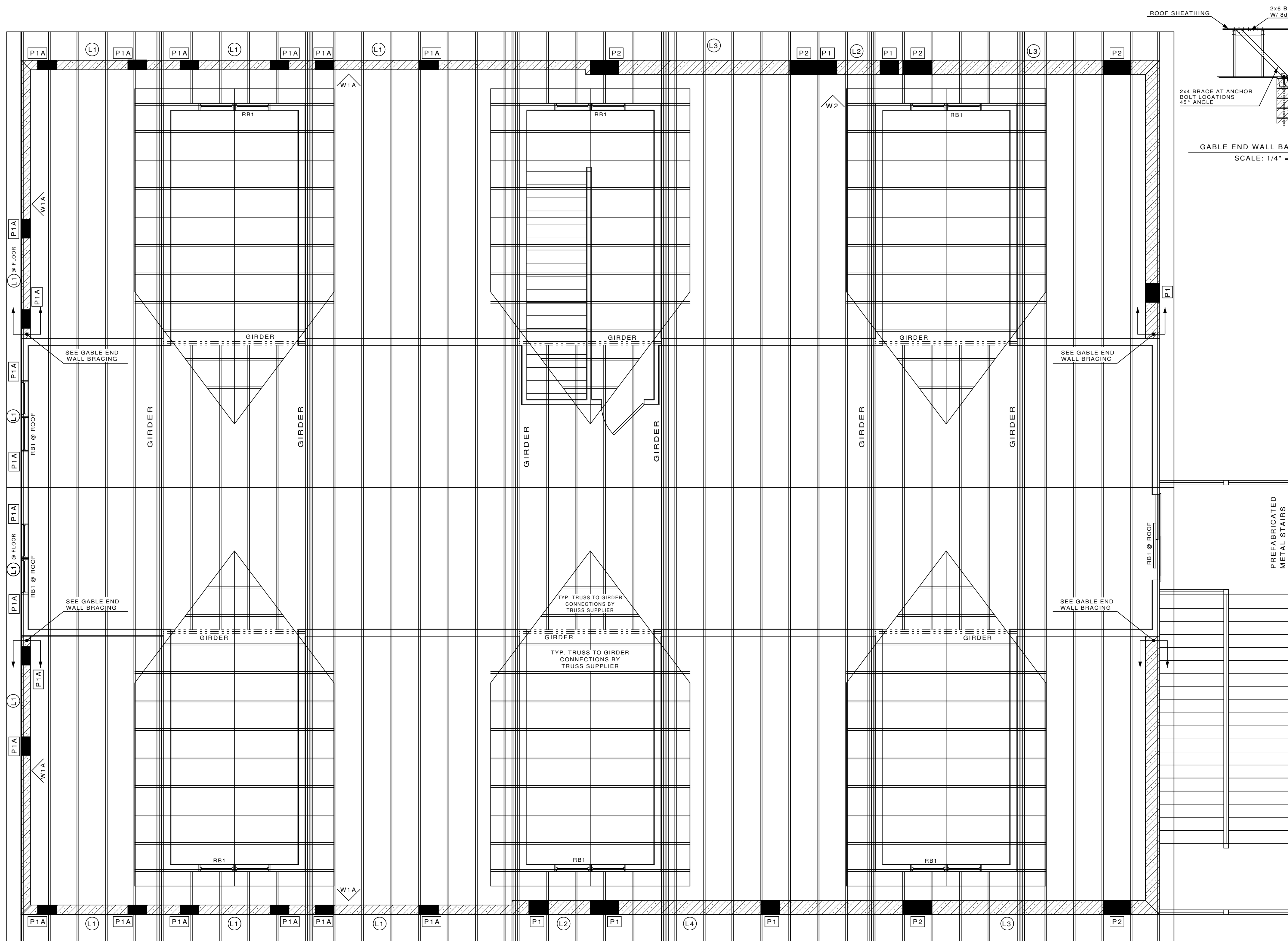


- PLAN NOTE(S):
- ROOF DECK SHALL BE 9/16" OSB (40/20) SHEATHING PERP TO FRAMING & STAGGERED & NAIL W/ 8d NAILS AT 6" O.C. AT EDGES AND 12" O.C. ALONG INTERMEDIATE FRAMING MEMBERS.
  - TRUSS SUPPLIER TO PROVIDE TRUSS TO PLATE METAL FRAMING ANCHORS



MASONRY LINTEL SCHEDULE	
MARK	SIZE
(L1)	W8x18 WITH 5/16" x11" BOTTOM PLATE
(L2)	12" BOND BEAM W/ ( 2 ) #4
(L3)	W12x40 WITH 5/16" BOTTOM PLATE
(L4)	W12x26 WITH 5/16" BOTTOM PLATE
(L5)	W8x18 WITH 5/16" X 7" BOTTOM PLATE

- NOTES:
- BEAR STEEL LINTELS 8" MIN. EACH END
  - PROVIDE MIN. ( 2 ) #5 @ 8" O.C. AT JAMBS.
  - WHERE BOTTOM PLATE IS PROVIDED AT STEEL LINTELS, EXTEND TO WITH IN 1/2" OF JAMB. DO NOT EXTEND THROUGH JAMB AT BEAM BEARING.
  - WHERE REINFORCING IS PROVIDED, EXTEND BARS 24" PAST JAMB.

ROOF BEAM SCHEDULE	
MARK	SIZE
RB1	2-PLY 2x10
RB2	2-PLY 11 7/8" LVL

24" FLOOR TRUSSES @ 16" O.C.  
FLOOR FRAMING PLAN @ DORMER  
SCALE: 1/4" = 1'-0"

24" FLOOR TRUSSES @ 16" O.C.  
FLOOR FRAMING PLAN @ DORMER WITH STAIRS  
SCALE: 1/4" = 1'-0"



ROOF FRAMING PLAN  
SCALE: 1/4" = 1'-0"

I HEREBY CERTIFY THAT THIS PLAN, SPECIFICATION OR REPORT WAS PREPARED BY ME OR UNDER MY DIRECT SUPERVISION AND THAT I AM A LICENSED PROFESSIONAL ENGINEER UNDER THE LAWS OF THE STATE OF MINNESOTA.

SIGNATURE: \_\_\_\_\_  
TYPED OR PRINTED NAME: \_\_\_\_\_  
DATE: \_\_\_\_\_  
REGISTRATION NO. \_\_\_\_\_

ISANTI FIRE DISTRICT  
ISANTI, MINNESOTA 55040

PROJECT # : 1006  
DATE : 4/22/10  
REV. : 5/20/10  
REV. : 5/24/10  
REV. : 6/18/10  
REV. : 6/27/10

**S108**

CONSTRUCTION DOCUMENTS