

# NEW YEAR'S DOLL AUCTION

Antique and Mid-Century Dolls, Bears and Accessories

**PREVIEW:**

Friday,  
January 6  
1-5PM

**SATURDAY**  
January 7, 2012

DOORS OPEN AT 9:00 AM

10:00 AM ET Gallery Auctions

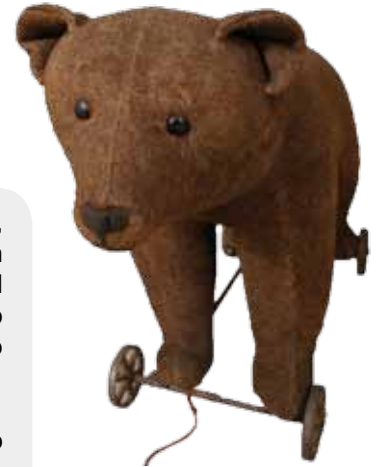
12:00 PM ET Gallery/Internet



1930's-40's MILITARY  
COMPOSITION DOLLS



SCHOENHUT'S HUMPTY  
DUMPTY CIRCUS, EARLY 1900's



24" EARLY STEIFF TEDDY BEAR ON  
WHEELS, CIRCA 1906

Featuring: French Bebés & Fashion Dolls, Jumeau, Steiner, and other rare French & German antique dolls including Simon & Halbig, Kammer & Reinhardt, and Kestner. Fabulous doll collections from New Jersey and New York largely make up this auction offering. Fine composition and hard plastics to include Madame Alexander, Effanbee, Ideal and others.

Also, included are early bears by Steiff, Ideal and Schuco others, Schoenhut's Humpty Dumpty Circus Menagerie. We also have many fine all bisques, and cloth dolls to include Kathe Kruse and Lenci. Many lots of clothing and accessories. Hundreds of "Non-Internet" lots, including box lots, offered to attending bidders only!

This will be  
a two ring,  
fast paced  
auction. Lunch  
available at Big  
Apple Café.



18" K\*R #117 ANTIQUE BISQUE  
DOLL WITH WARDROBE



COMPOSITION MADAME ALEXANDER  
DIONNE QUINTUPLETS, DR. DAFOE &  
NURSE, CIRCA 1935-36



17" KATHE KRUSE  
"DOLL I" CLOTH DOLL,  
CIRCA 1920



25" DEPOSE' JUMEAU BEBE' SECOND  
SERIES ANTIQUE BISQUE DOLL



20" AND 18" COMPOSITION  
IDEAL SHIRLEY TEMPLE DOLLS

Online auction catalog and internet/absentee bidding available at [www.McMastersHarris.com](http://www.McMastersHarris.com)

**TERMS:** Buyer's premium 13% (3% discount cash/check) for gallery & 16% for Internet

**AUCTIONEERS:** Mark Harris, Sam Schnaidt, David Schnaidt, Debbie Schnaidt Allen

**McMasters Harris**  
AUCTION CO.



DOLL AUCTIONS

McMasters Harris Apple Tree Doll Auctions  
1625 West Church St.  
Newark, Ohio 43055

800-842-3526

# NEW YEAR'S DOLL AUCTION

Antique and Mid-Century Dolls, Bears and Accessories

SATURDAY January 7, 2012

fab • u • lous



21" KESTNER "AT" ANTIQUE  
BISQUE DOLL



HARD PLASTIC MADAME ALEXANDER  
DOLLS, CIRCA 1950's



ANTIQUe GERMAN GROCERY STORE  
WITH ANTIQUe BISQUE SMALL DOLLS

BUYING OR SELLING INQUIRIES PLEASE CONTACT:

MARK HARRIS, auctioneer  
740-877-5357  
mark@mcmastersharris.com

Don't miss out  
on this fabulous  
auction! It's one  
you can't afford  
to miss!